



BWC
KITCHEN & BATH

Kitchen Cabinet Sizes & Dimensions 101: The Complete Guide

www.buywholesalecabinets.com

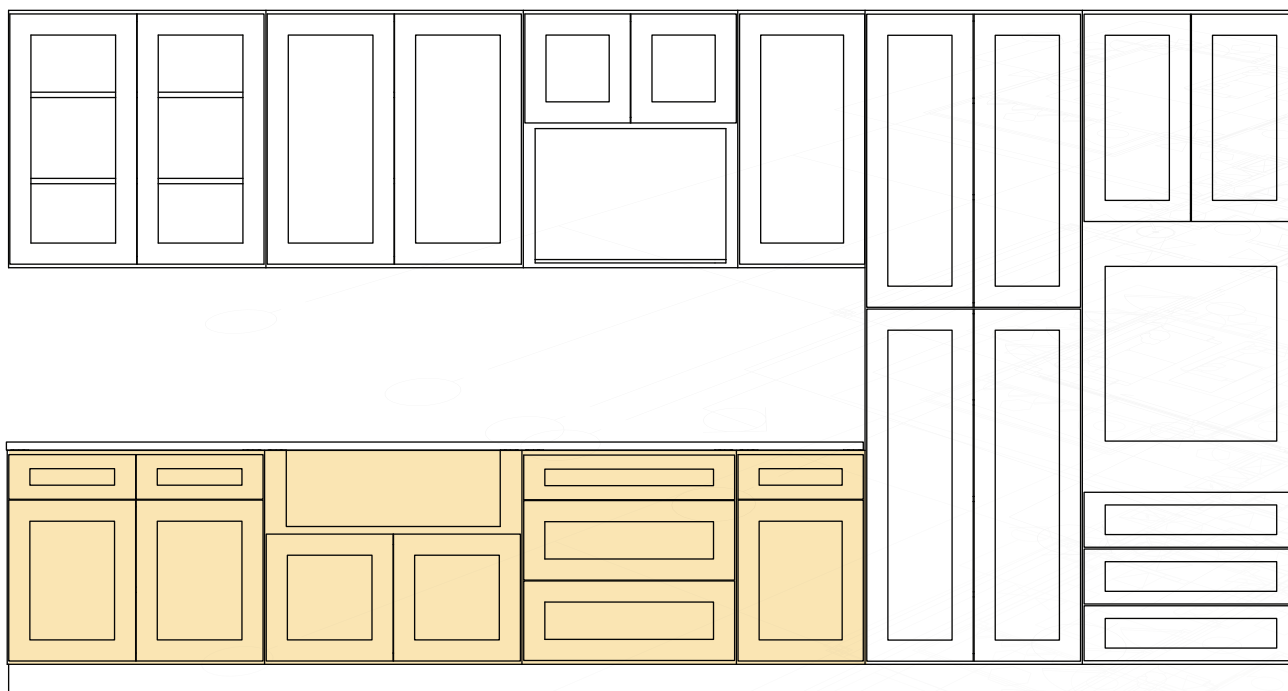
KITCHEN BASE CABINET DIMENSIONS



The standard base cabinet height is 34.5 inches (reaching a finished 36-inch height with a countertop) and features a standard kitchen depth of 24 inches, with 21-inch options available for vanities. To accommodate diverse floor plans, we offer widths ranging from 9 to 42 inches in precise 3-inch increments.

BASE CABINET DIMENSIONS	STANDARD MEASUREMENT	DETAILS AND APPLICATION
HEIGHT	34.5" (CABINET ONLY) 36" (W/ COUNTERTOP)	36" is the ideal working height - It balances comfort for prep/cleaning and aligns perfectly with standard dishwashers and slide-in ranges.
DEPTH	24" (STANDARD) 21" (VANITY STANDARD)	24" is the industry standard. It provides ample space for plumbing and drawers. Note: 21" is standard for vanities and is also a solution for tight spaces.
WIDTH	9" TO 42" (AVAILABLE IN 3" INCREMENTS)	These widths are selected to accommodate specific functions, such as sink bases, drawer stacks, or tray dividers, tailored to each kitchen's unique requirements.

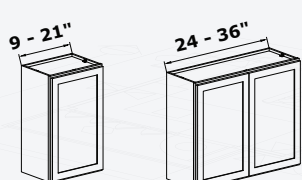
DIMENSIONS IN INCHES



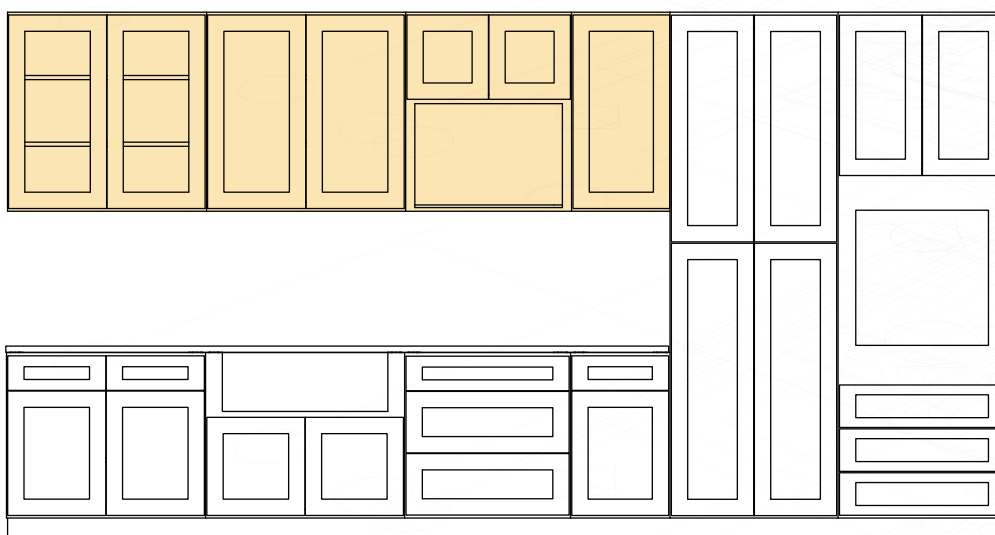
KITCHEN WALL CABINET DIMENSIONS



Standard wall cabinets come in heights of 30, 36, and 42 inches (with 12 to 24-inch bridge units) and feature a standard depth of 12 inches, with deep 24-inch options available for refrigerator enclosures. To ensure a custom fit for any layout, we offer widths ranging from 9 to 36 inches in precise 3-inch increments.

BASE CABINET DIMENSIONS	STANDARD MEASUREMENT	DETAILS AND APPLICATION
HEIGHT	12" - 24" (APPLIANCE/BRIDGE)	12" / 15": Used for 7ft layouts; pairs with 30" tall wall cabinets. 18": It is common for 7.5ft layouts; pairs with 36" tall wall cabinets. 24": Used for 8ft layouts; pairs with 42" tall wall cabinets to sit flush against the ceiling.
	30", 36", 42" (GENERAL STORAGE)	30": Used for 7ft ceilings or soffits below 12". 36": Used for 7.5ft alignment or 8ft ceilings with tall crown molding. 42": Best for 8ft ceilings to achieve a seamless, flush look.
DEPTH	12" (STANDARD) 24" (DEEP)	12": The industry standard. Ensures easy access and allows small appliances to fit underneath. 24": Used above refrigerators and typically installed between side panels to fully enclose the appliance for a built-in look.
WIDTH	9" TO 36" (AVAILABLE IN 3" INCREMENTS)	

DIMENSIONS IN INCHES



TALL KITCHEN CABINET DIMENSIONS



Tall pantry cabinets stand 84, 90, and 96 inches high (designed to reach 8-foot ceilings with options for trim or a built-in look) and feature a standard depth of 24 inches to align perfectly with base cabinets and appliances. To accommodate specific storage and oven requirements, we offer widths of 18, 24, and 30-33 inches.

BASE CABINET DIMENSIONS	STANDARD MEASUREMENT	DETAILS AND APPLICATION
HEIGHT	84"	Leaves space for trim or crown molding in homes with 8-foot ceilings.
	90"	A slightly taller option for a near-ceiling finish.
	96"	Designed to reach an 8-foot ceiling for a built-in look.
DEPTH	24" (STANDARD)	The industry standard that aligns perfectly with base cabinets and appliances for an integrated look.
WIDTH	18"	Great for narrow, pull-out pantry shelves.
	24"	Standard double-door pantries with versatile shelving.
	30/33"	This is the minimum width of an oven pantry that also accommodates wider trays, bins, and storage baskets.

DIMENSIONS IN INCHES

