



**BWC**  
KITCHEN & BATH



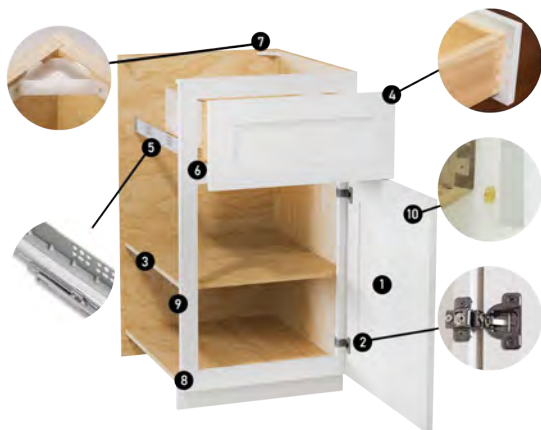
BUY WHOLESALE CABINETS  
**CATALOG 2025**

[www.buywholesalecabinets.com](http://www.buywholesalecabinets.com)





# Cabinet Construction



- ① Full overlay panel, ¾ inch thick solid wood
- ② 6-way adjustable European-style hinge with soft-close feature
- ③ Shelving is ¾ inch thick cabinet-grade plywood with front edge banding
- ④ Dovetail drawers with solid wood on all sides, full extension
- ⑤ Under-mount full extension drawer glides with soft-close feature
- ⑥ ½ inch cabinet-grade plywood box, UV coated natural plywood on interior
- ⑦ Bracket reinforcements for base cabinet
- ⑧ Double-doweled face frame joint
- ⑨ Hardwood face frame
- ⑩ Door bumpers

## Door Styles



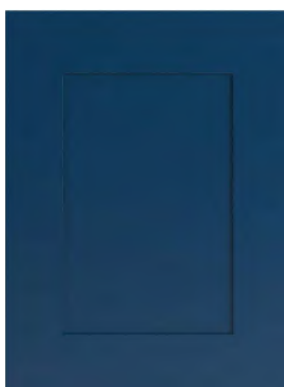
**SW**  
Shaker White



**GR**  
Shaker Gray



**SE**  
Shaker Espresso



**NB**  
Navy Blue



**CW**  
Charleston White

# Table of Contents

Wall Cabinet .....	5 - 17
Base Cabinet .....	18 - 25
Pantries .....	26-27
Vanities .....	29 - 30
Moulding .....	31 - 33
Filler & Panels .....	34 - 35
Accessories .....	36 - 37

## How to Order

### To order:

Specify the 2-letter door style (shown on the inside front cover of this book), followed by the product number for the cabinet.

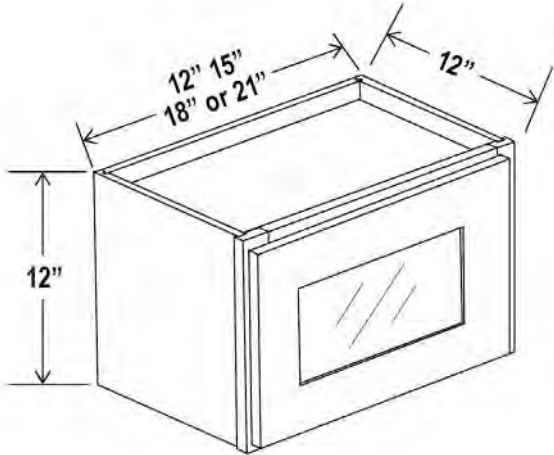
### Example:

**GR-W1812GD** would be the product number to use to order a Shaker Gray (**GR**) Wall Cabinet, 12" high, 18" wide and 12" deep with a Single Glass Door (*shown on page 5*) (**W1812GD**).



**GR**  
Shaker Gray

Wall Cabinet Single Glass Doors, **12" H**



- W1212GD
- W1512GD
- W1812GD**
- W2112GD

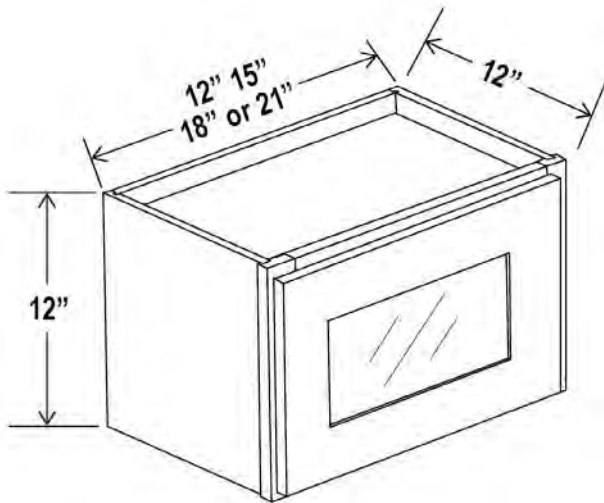
*Clear glass included / Color Matched Interior*



# Wall Cabinet Specifications

## Wall Cabinets

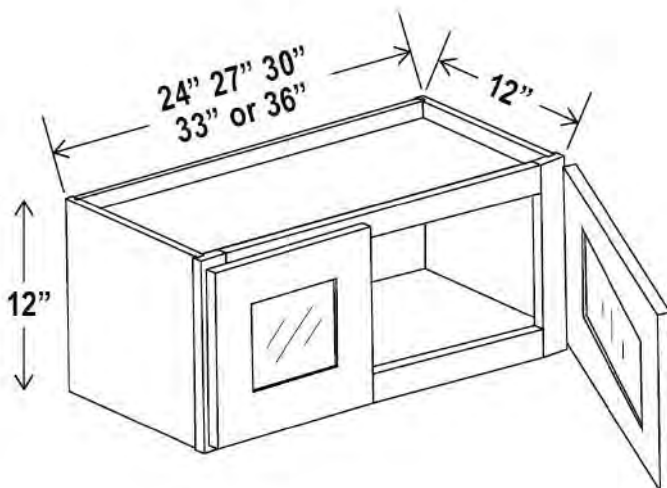
### Wall Cabinet Single Glass Doors, 12"H



Item Code		W	H	D
<b>W1212GD</b>	Cabinet	12	12	12
	Door	11 1/2	11	3/4
<b>W1512GD</b>	Cabinet	15	12	12
	Door	14 1/2	11	3/4
<b>W1812GD</b>	Cabinet	18	12	12
	Door	17 1/2	11	3/4
<b>W2112GD</b>	Cabinet	21	12	12
	Door	20 1/2	11	3/4

Clear glass included  
Color Matched Interior

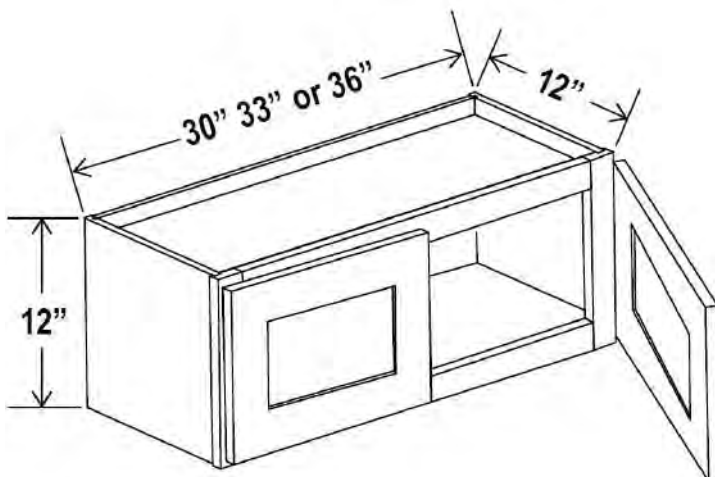
### Wall Cabinet Double Glass Doors, 12"H



Item Code		W	H	D
<b>W2412GD</b>	Cabinet	24	12	12
	Door	11 3/4	11	3/4
<b>W2712GD</b>	Cabinet	27	12	12
	Door	13 1/4	11	3/4
<b>W3012GD</b>	Cabinet	30	12	12
	Door	14 3/4	11	3/4
<b>W3312GD</b>	Cabinet	33	12	12
	Door	16 1/4	11	3/4
<b>W3612GD</b>	Cabinet	36	12	12
	Door	17 3/4	11	3/4

Clear glass included  
Color Matched Interior

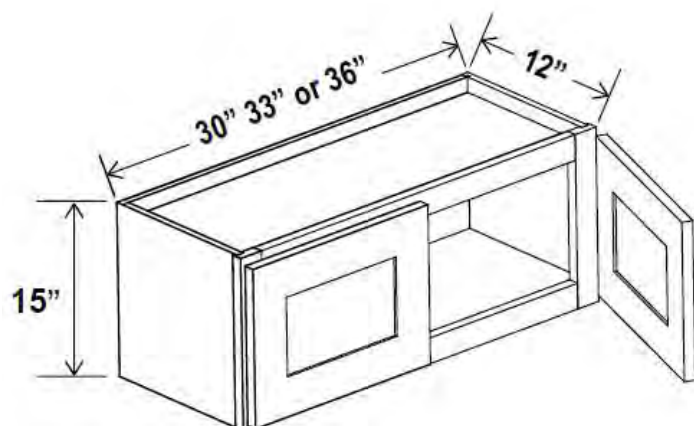
### Wall Cabinet Double Doors, 12"H



Item Code		W	H	D
<b>W3012</b>	Cabinet	30	12	12
	Door	14 3/4	11	3/4
<b>W3312</b>	Cabinet	33	12	12
	Door	16 1/4	11	3/4
<b>W3612</b>	Cabinet	36	12	12
	Door	17 3/4	11	3/4

No shelf

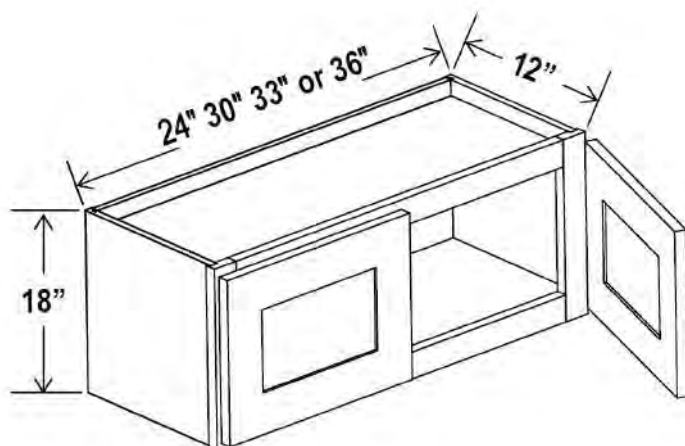
## Wall Cabinet Double Doors, 15"H



Item Code		W	H	D
<b>W3015</b>	Cabinet	30	15	12
	Door	14 3/4	14	3/4
<b>W3315</b>	Cabinet	33	15	12
	Door	16 1/4	14	3/4
<b>W3615</b>	Cabinet	36	15	12
	Door	17 3/4	14	3/4

No shelf

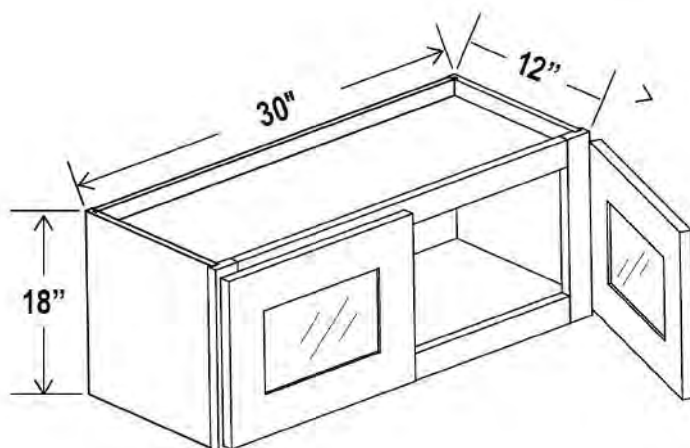
## Wall Cabinet Double Doors, 18"H



Item Code		W	H	D
<b>W2418</b>	Cabinet	24	18	12
	Door	11 3/4	17	3/4
<b>W3018</b>	Cabinet	30	18	12
	Door	14 3/4	17	3/4
<b>W3318</b>	Cabinet	33	18	12
	Door	16 1/4	17	3/4
<b>W3618</b>	Cabinet	36	18	12
	Door	17 3/4	17	3/4

No shelf

## Wall Cabinet Double Glass Doors, 18"H



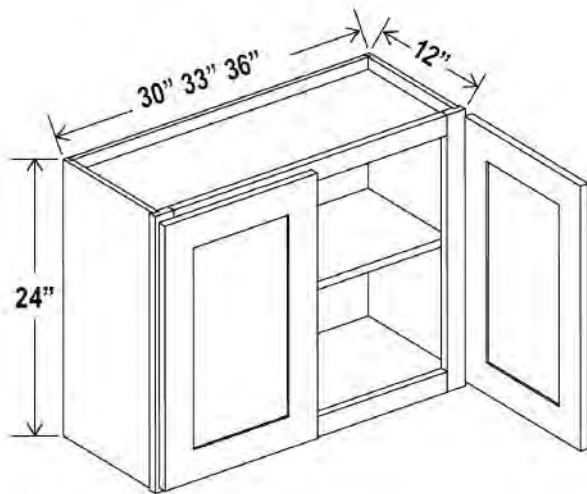
Item Code		W	H	D
<b>W3018GD</b>	Cabinet	30	18	12
	Door	14 3/4	17	3/4

Clear glass included  
Color Matched Interior

# Wall Cabinet Specifications

## Wall Cabinets

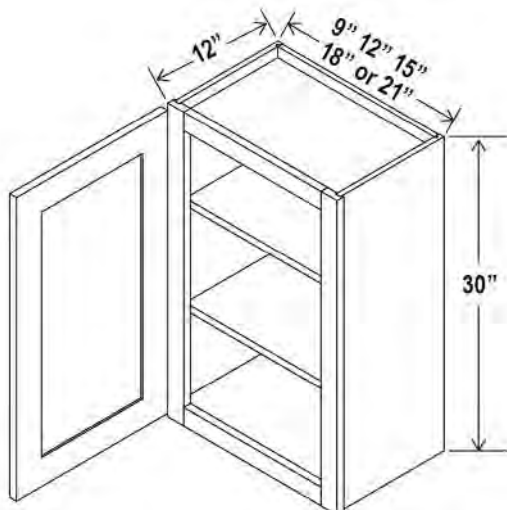
### Wall Cabinet Double Doors, 24"H



Item Code		W	H	D
<b>W3024</b>	Cabinet	30	24	12
	Door	14 3/4	23	3/4
<b>W3324</b>	Cabinet	33	24	12
	Door	16 1/4	23	3/4
<b>W3624</b>	Cabinet	36	24	12
	Door	17 3/4	23	3/4

*One adjustable shelf*

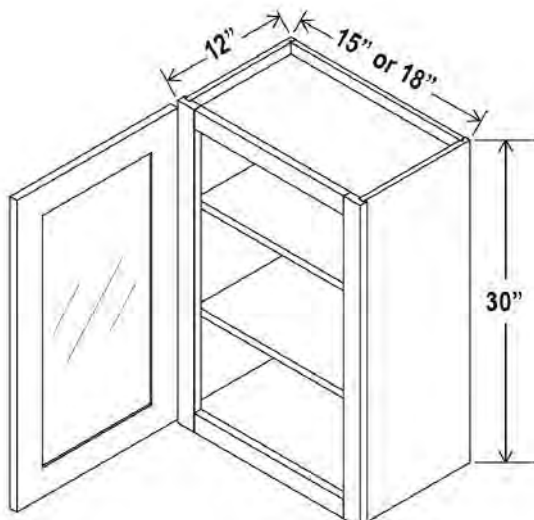
### Wall Cabinet Single Door, 30"H



Item Code		W	H	D
<b>W0930</b>	Cabinet	9	30	12
	Door	8 1/2	29	3/4
<b>W1230</b>	Cabinet	12	30	12
	Door	11 1/2	29	3/4
<b>W1530</b>	Cabinet	15	30	12
	Door	14 1/2	29	3/4
<b>W1830</b>	Cabinet	18	30	12
	Door	17 1/2	29	3/4
<b>W2130</b>	Cabinet	21	30	12
	Door	20 1/2	29	3/4

*Two adjustable shelves*

### Wall Cabinet Single Glass Door, 30"H



Item Code		W	H	D
<b>W1530GD</b>	Cabinet	15	30	12
	Door	14 1/2	29	3/4
<b>W1830GD</b>	Cabinet	18	30	12
	Door	17 1/2	29	3/4

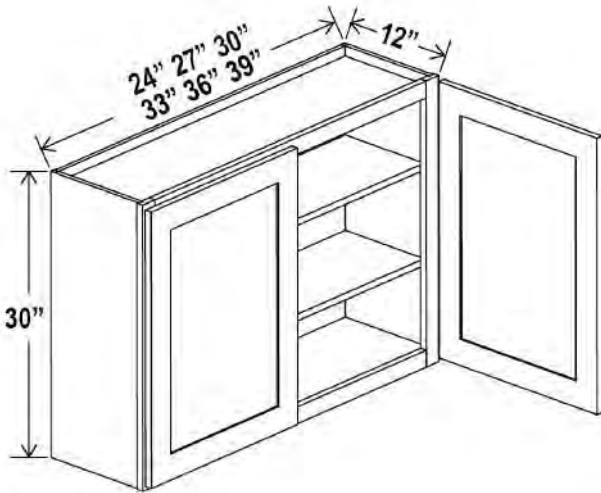
*Clear glass included  
Color matched interior  
Two adjustable shelves*



## Wall Cabinets

# Wall Cabinet Specifications

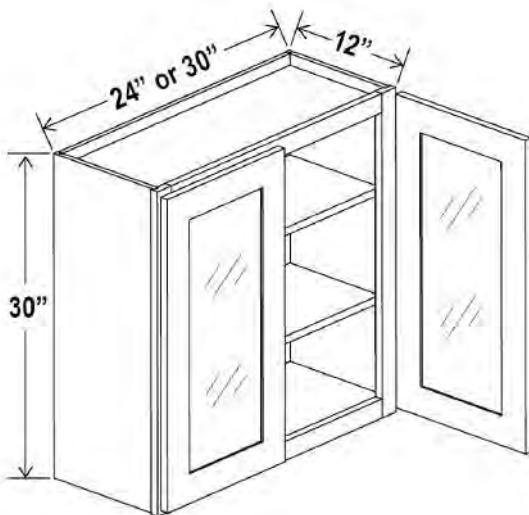
### Wall Cabinet Double Doors, 30"H



Item Code		W	H	D
<b>W2430</b>	Cabinet	24	30	12
	Door	11 3/4	29	3/4
<b>W2730</b>	Cabinet	27	30	12
	Door	13 1/4	29	3/4
<b>W3030</b>	Cabinet	30	30	12
	Door	14 3/4	29	3/4
<b>W3330</b>	Cabinet	33	30	12
	Door	16 1/4	29	3/4
<b>W3630</b>	Cabinet	36	30	12
	Door	17 3/4	29	3/4
<b>W3930</b>	Cabinet	39	30	12
	Door	19 1/4	29	3/4

*Two adjustable shelves*

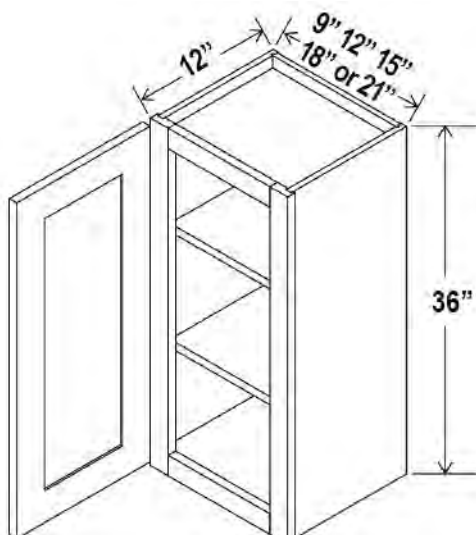
### Wall Cabinet Double Glass Doors, 30"H



Item Code		W	H	D
<b>W2430GD</b>	Cabinet	24	30	12
	Door	11 3/4	29	3/4
<b>W3030GD</b>	Cabinet	30	30	12
	Door	14 3/4	29	3/4

*Clear glass included  
Color Matched Interior  
Two adjustable shelves*

### Wall Cabinet Single Door, 36"H



Item Code		W	H	D
<b>W0936</b>	Cabinet	9	36	12
	Door	8 1/2	35	3/4
<b>W1236</b>	Cabinet	12	36	12
	Door	11 1/2	35	3/4
<b>W1536</b>	Cabinet	15	36	12
	Door	14 1/2	35	3/4
<b>W1836</b>	Cabinet	18	36	12
	Door	17 1/2	35	3/4
<b>W2136</b>	Cabinet	21	36	12
	Door	20 1/2	35	3/4

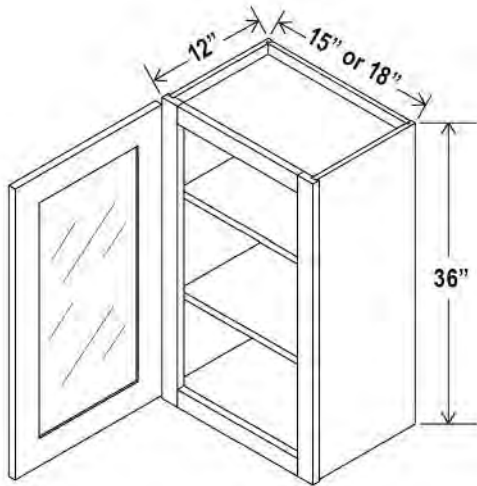
*Two adjustable shelves*



# Wall Cabinet Specifications

## Wall Cabinets

### Wall Cabinet Single Glass Door, 36"H

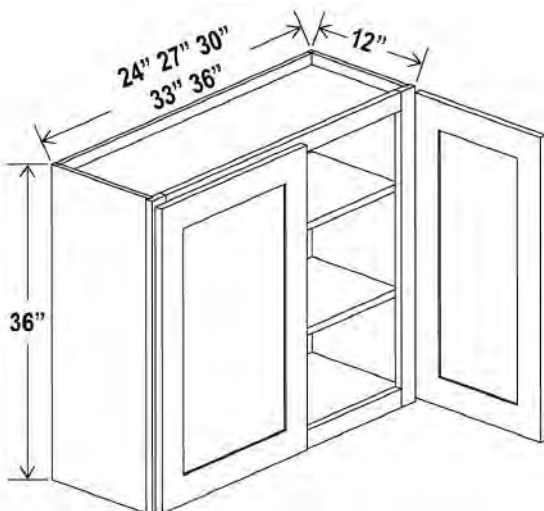


#### Wall Cabinet Single Glass Door

Item Code		W	H	D
<b>W1536GD</b>	Cabinet	15	36	12
	Door	14 1/2	35	3/4
<b>W1836GD</b>	Cabinet	18	36	12
	Door	17 1/2	35	3/4

Clear glass included  
Color Matched Interior  
Two adjustable shelves

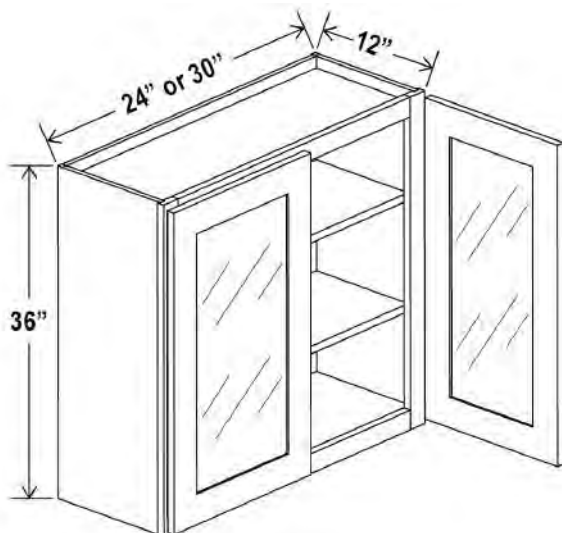
### Wall Cabinet Double Doors, 36"H



Item Code		W	H	D
<b>W2436</b>	Cabinet	24	36	12
	Door	11 3/4	35	3/4
<b>W2736</b>	Cabinet	27	36	12
	Door	13 1/4	35	3/4
<b>W3036</b>	Cabinet	30	36	12
	Door	14 3/4	35	3/4
<b>W3336</b>	Cabinet	33	36	12
	Door	16 1/4	35	3/4
<b>W3636</b>	Cabinet	36	36	12
	Door	17 3/4	35	3/4

Two adjustable shelves

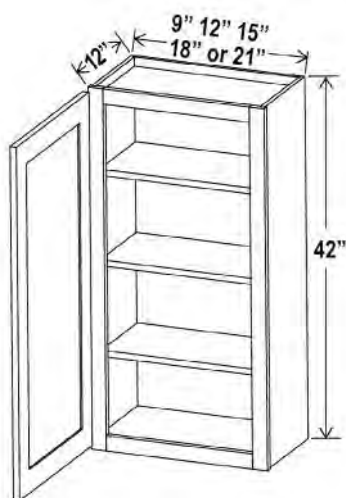
### Wall Cabinet Double Glass Doors, 36"H



Item Code		W	H	D
<b>W2436GD</b>	Cabinet	24	36	12
	Door	11 3/4	35	3/4
<b>W3036GD</b>	Cabinet	30	36	12
	Door	14 3/4	35	3/4

Clear glass included  
Color Matched Interior  
Two adjustable shelves

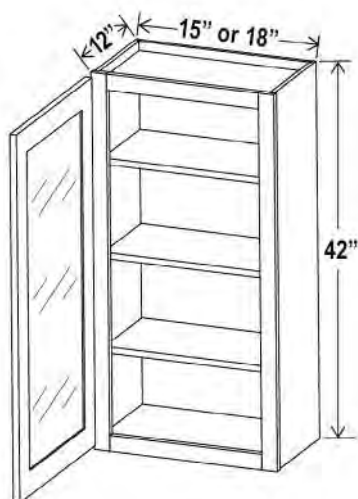
## Wall Cabinet Single Door, 42"H



Item Code		W	H	D
<b>W0942</b>	Cabinet	9	42	12
	Door	8 1/2	41	3/4
<b>W1242</b>	Cabinet	12	42	12
	Door	11 1/2	41	3/4
<b>W1542</b>	Cabinet	15	42	12
	Door	14 1/2	41	3/4
<b>W1842</b>	Cabinet	18	42	12
	Door	17 1/2	41	3/4
<b>W2142</b>	Cabinet	21	42	12
	Door	20 1/2	41	3/4

Three adjustable shelves

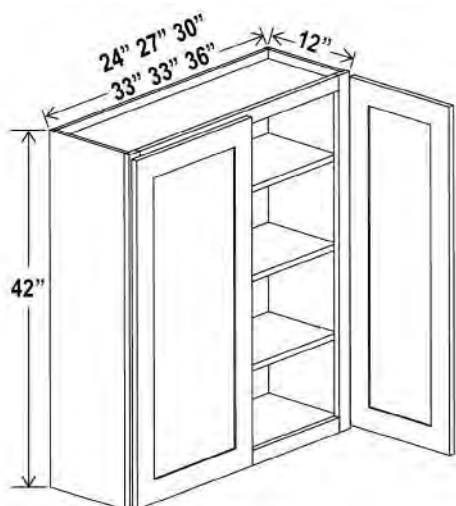
## Wall Cabinet Single Glass Door, 42"H



Item Code		W	H	D
<b>W1542GD</b>	Cabinet	15	42	12
	Door	14 1/2	41	3/4
<b>W1842GD</b>	Cabinet	18	42	12
	Door	17 1/2	41	3/4

Clear glass included  
Color matched interior  
Three adjustable shelves

## Wall Cabinet Double Doors, 42"H



Item Code		W	H	D
<b>W2442</b>	Cabinet	24	42	12
	Door	11 3/4	41	3/4
<b>W2742</b>	Cabinet	27	42	12
	Door	13 1/4	41	3/4
<b>W3042</b>	Cabinet	30	42	12
	Door	14 3/4	41	3/4
<b>W3342</b>	Cabinet	33	42	12
	Door	16 1/4	41	3/4
<b>W3642</b>	Cabinet	36	42	12
	Door	17 3/4	41	3/4

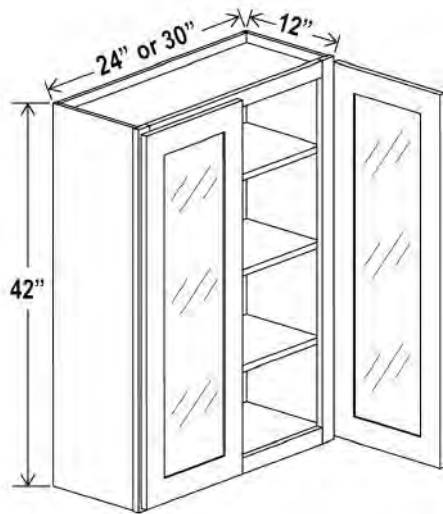
Three adjustable shelves



# Wall Cabinet Specifications

## Wall Cabinets

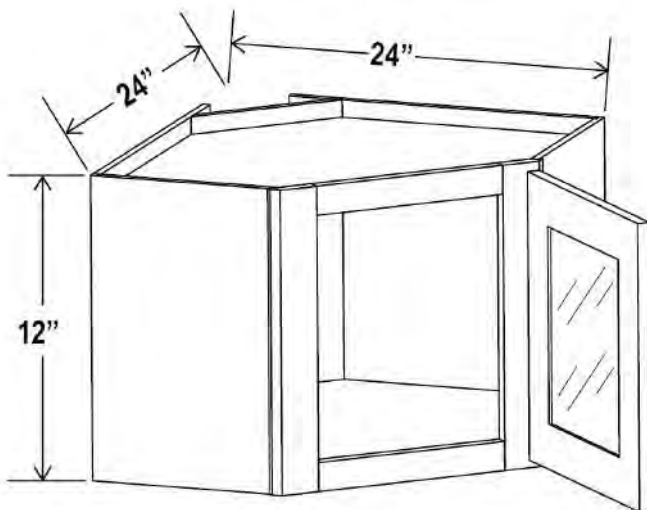
### Wall Cabinet Double Glass Doors, 42"H



Item Code		W	H	D
W2442GD	Cabinet	24	42	24
	Door	11 3/4	41	3/4
W3042GD	Cabinet	30	42	12
	Door	14 3/4	41	3/4

Clear glass included  
Color matched interior

### Diagonal Corner Wall Glass Door, 24"W



Item Code		W	H	D
DCW2412GD	Cabinet	24	12	12
	Door	15 1/4	11	3/4

Clear glass included  
Color matched interior

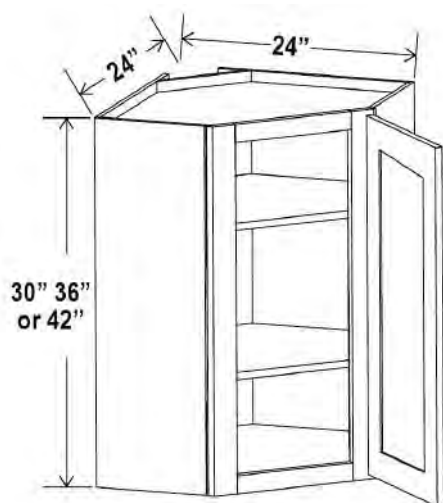
### Diagonal Corner Wall Glass Door, 24"W



Item Code		W	H	D
DCW2430GD	Cabinet	24	30	12
	Door	15 1/4	29	3/4
DCW2436GD	Cabinet	24	36	12
	Door	15 1/4	35	3/4
DCW2442GD	Cabinet	24	42	12
	Door	15 1/4	41	3/4

Color matched interior  
Two adjustable shelves

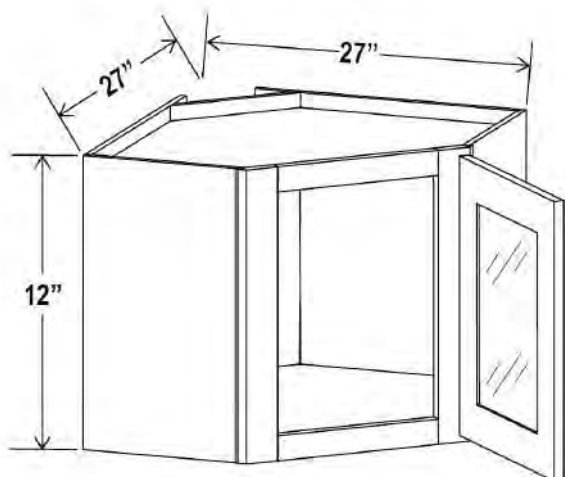
## Diagonal Corner Wall Single Door, 24"W



Item Code		W	H	D
DCW2430	Cabinet	24	30	12
	Door	15 1/4	29	3/4
DCW2436	Cabinet	24	36	12
	Door	15 1/4	35	3/4
DCW2442	Cabinet	24	42	12
	Door	15 1/4	41	3/4

Two adjustable shelves (30"-36")  
Three adjustable shelves (42")

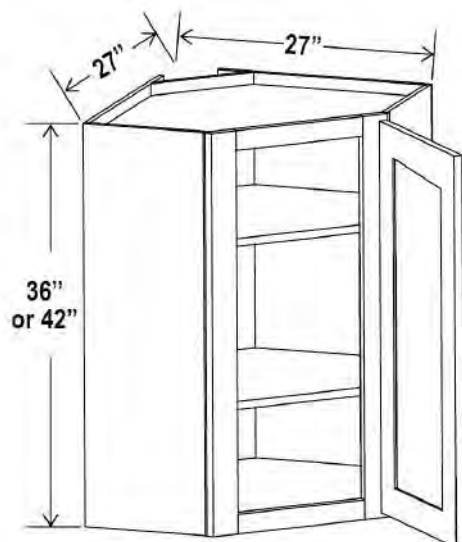
## Diagonal Corner Wall Single Glass Door, 27"W



Item Code		W	H	D
DCW2712GD	Cabinet	27	12	15
	Door	15 1/4	11	3/4

Clear glass included  
Color matched interior

## Diagonal Corner Wall Cabinet, 27"W



Item Code		W	H	D
DCW2736	Cabinet	27	36	15
	Door	15 1/4	35	3/4
DCW2742	Cabinet	27	42	15
	Door	15 1/4	41	3/4

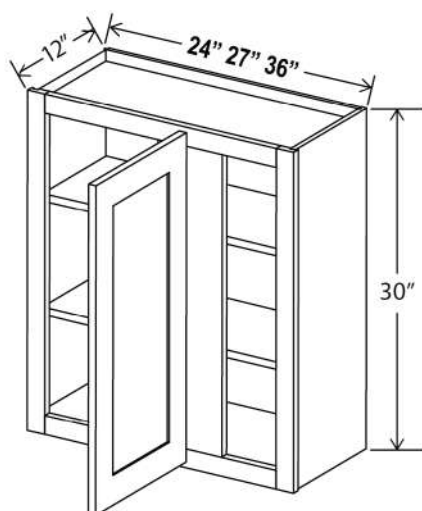
Two adjustable shelves (36")  
Three adjustable shelves (42")



# Wall Cabinet Specifications

## Wall Cabinets

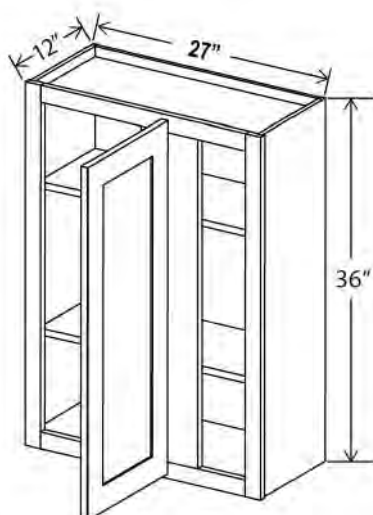
### Wall Blind Corner Cabinet, 30"H



Item Code		W	H	D
<b>WBC2430</b>	Cabinet	24	30	12
	Door	9 9/16	29	3/4
<b>WBC2730</b>	Cabinet	27	30	12
	Door	12 9/16	29	3/4
<b>WBC3630</b>	Cabinet	36	30	12
	Door	21 9/16	35	3/4

Two adjustable shelves  
Can be pulled for exact fit

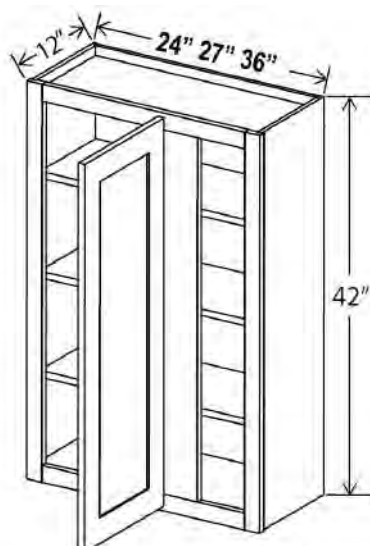
### Wall Blind Corner Cabinet, 36"H



Item Code		W	H	D
<b>WBC2736</b>	Cabinet	27	36	12
	Door	12 9/16	35	3/4

Three adjustable shelves  
Can be pulled for exact fit

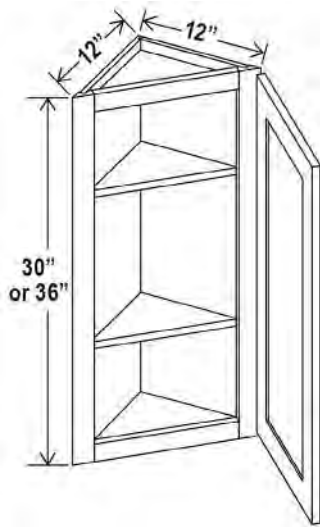
### Wall Blind Corner Cabinet, 42"H



Item Code		W	H	D
<b>WBC2442</b>	Cabinet	24	42	12
	Door	9 9/16	41	3/4
<b>WBC2742</b>	Cabinet	27	42	12
	Door	12 9/16	41	3/4
<b>WBC3642</b>	Cabinet	36	42	12
	Door	21 9/16	41	3/4

Three adjustable shelves  
Can be pulled for exact fit

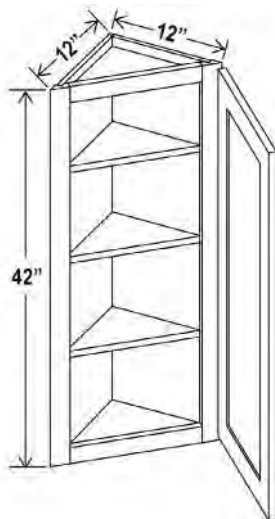
## Angle Wall Cabinet, 12"



Item Code		W	H	D
AW1230	Cabinet	12	30	12
	Door	15 3/5	29	3/4
AW1236	Cabinet	12	36	12
	Door	15 3/5	35	3/4

Two adjustable shelves

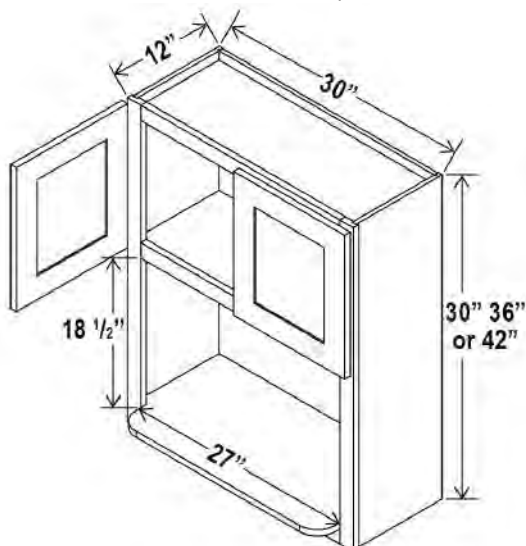
## Angle Wall Cabinet, 12"W



Item Code		W	H	D
AW1242	Cabinet	12	42	12
	Door	15 3/5	41	3/4

Three adjustable shelves

## Microwave Wall Cabinet, 30"W



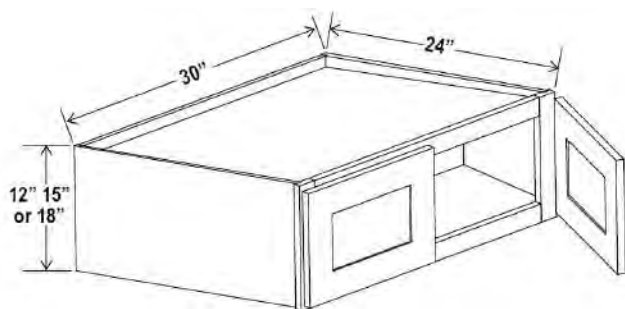
Item Code		W	H	D
M03030	Cabinet	30	30	12
	Door	14 3/4	9 1/4	3/4
M03036	Cabinet	30	36	12
	Door	14 3/4	15 1/4	3/4
M03042	Cabinet	30	42	12
	Door	14 3/4	21 1/4	3/4
Opening Dimensions: 27 W x 18 1/2 H				



# Wall Cabinet Specifications

## Wall Cabinets

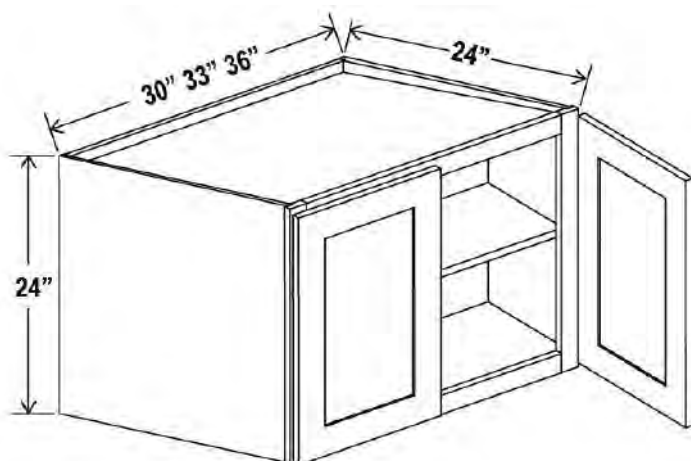
### Refrigerator Wall Cabinet Double Doors, 30"W



Item Code		W	H	D
<b>W301224</b>	Cabinet	30	12	24
	Door	14 3/4	11	3/4
<b>W301524</b>	Cabinet	30	15	24
	Door	14 3/4	14	3/4
<b>W301824</b>	Cabinet	30	18	24
	Door	14 3/4	17	3/4

No Shelf

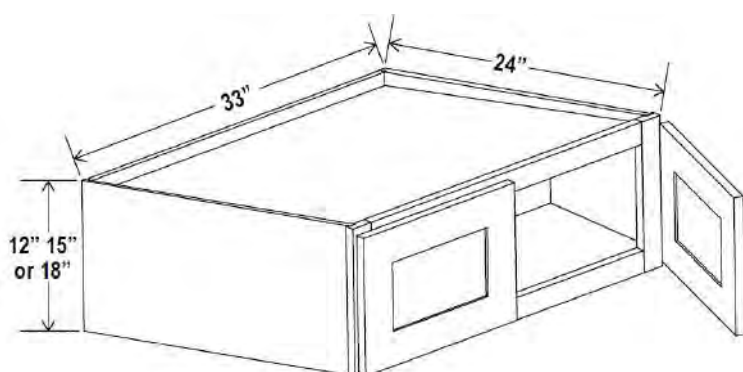
### Refrigerator Wall Cabinet Double Doors, 24"H



Item Code		W	H	D
<b>W302424</b>	Cabinet	30	24	24
	Door	14 3/4	23	3/4
<b>W332424</b>	Cabinet	33	24	24
	Door	16 1/4	23	3/4
<b>W362424</b>	Cabinet	36	24	24
	Door	17 3/4	23	3/4

One adjustable shelf

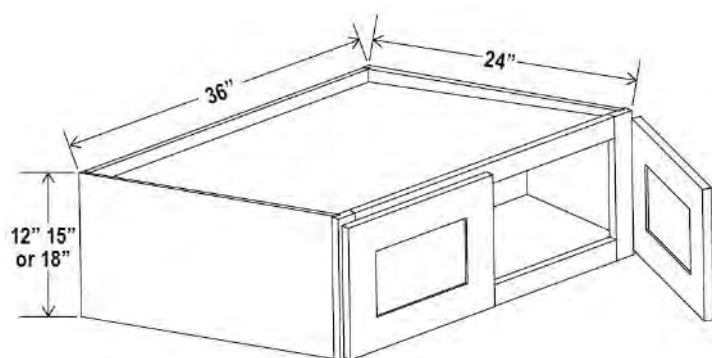
### Refrigerator Wall Cabinet Double Doors, 33"W



Item Code		W	H	D
<b>W331224</b>	Cabinet	33	12	24
	Door	16 1/4	11	3/4
<b>W331524</b>	Cabinet	33	15	24
	Door	16 1/4	14	3/4
<b>W331824</b>	Cabinet	33	18	24
	Door	16 1/4	17	3/4

No Shelf

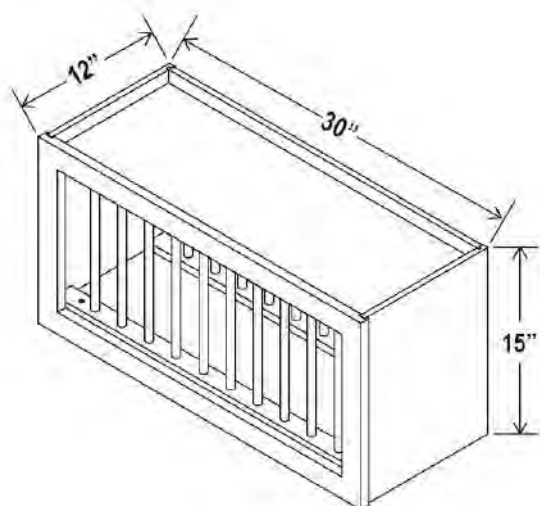
## Refrigerator Wall Cabinet Double Doors, 36"W



Item Code		W	H	D
W361224	Cabinet	36	12	24
	Door	17 3/4	11	3/4
W361524	Cabinet	36	15	24
	Door	17 3/4	14	3/4
W361824	Cabinet	36	18	24
	Door	17 3/4	17	3/4

No Shelf

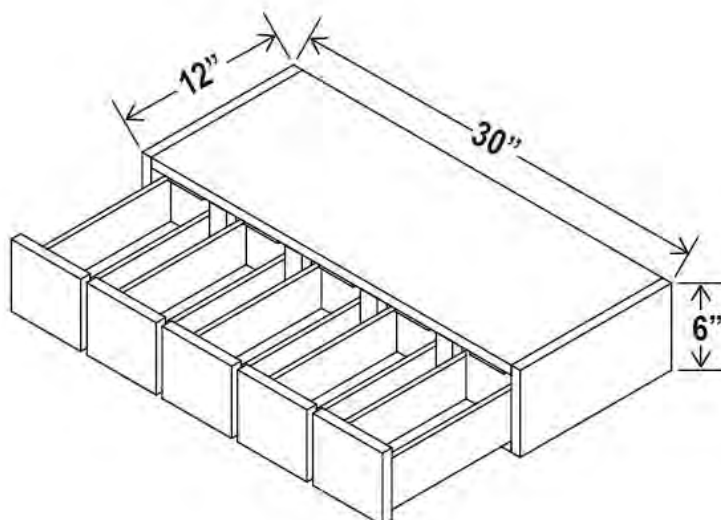
## Plate Rack, 15"H



Item Code		W	H	D
PR3015	Cabinet	30	15	12

11 plate slots

## Wall Spice Drawer, 6"H



Item Code		W	H	D
WSD630	Cabinet	30	6	12

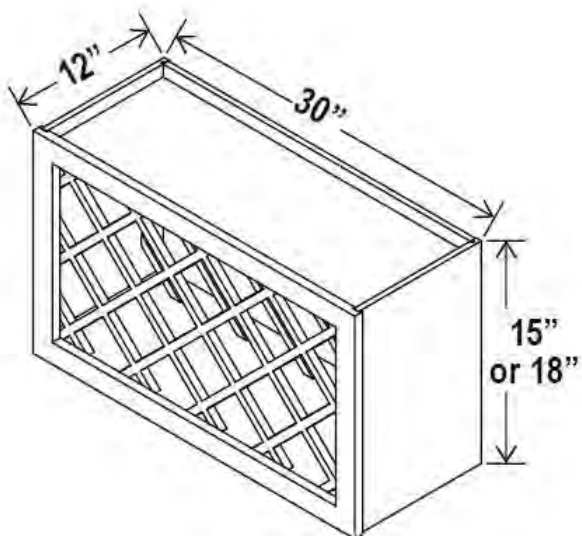
5 drawers



# Wall Cabinet Specifications

## Wall Cabinets

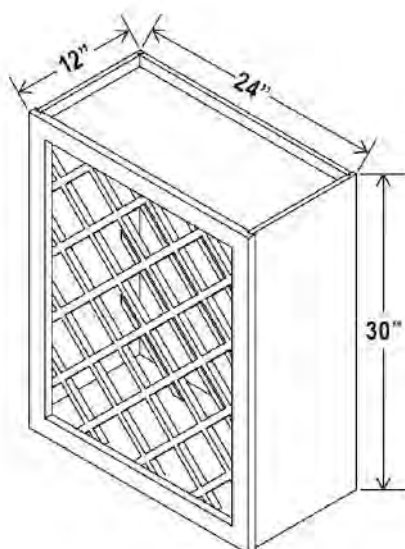
### Wine Rack, 30"W



Item Code		W	H	D
WRC3015	Cabinet	30	15	12
WRC3018	Cabinet	30	18	12

*Can install vertically or horizontally*

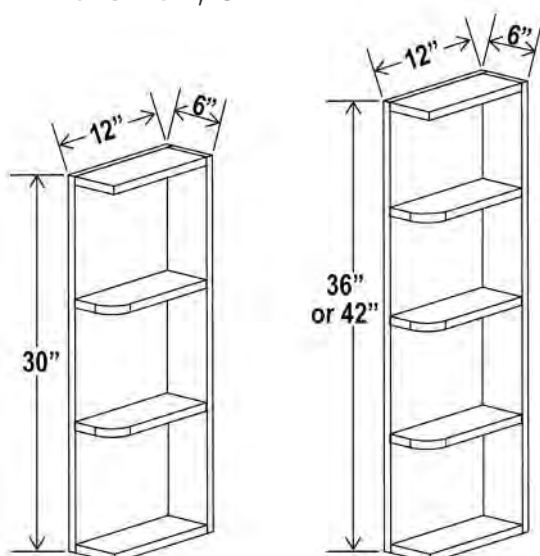
### Wine Rack, 36"H



Item Code		W	H	D
WRC2430	Cabinet	24	30	12

*Can install vertically or horizontally*

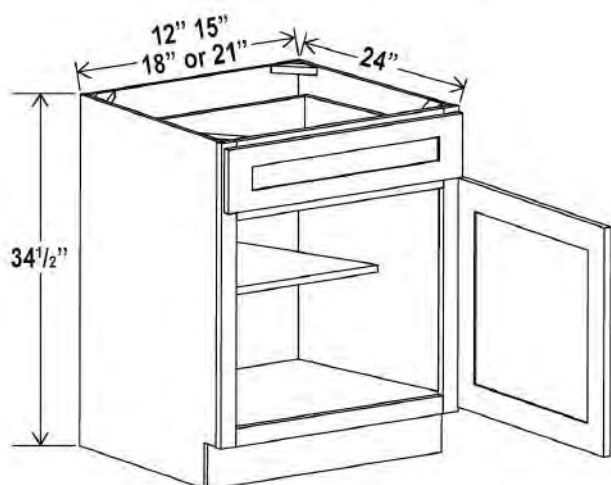
### Open End Shelf, 6"W



Item Code		W	H	D
OE630	Cabinet	6	30	12
OE636	Cabinet	6	36	12
OE642	Cabinet	6	42	12

*Matching color interior*

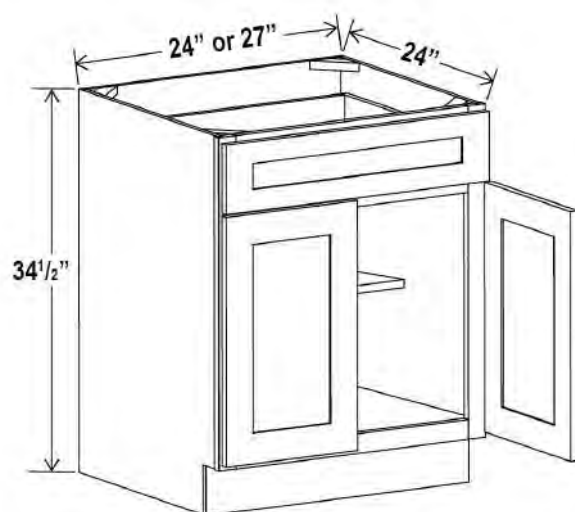
## Base Cabinet Single Door



Item Code		W	H	D
<b>B12</b>	Cabinet	12	34 1/2	24
	Door	11 1/2	22 1/2	3/4
	Drawer	11 1/2	6 1/4	3/4
<b>B15</b>	Cabinet	15	34 1/2	24
	Door	14 1/2	22 1/2	3/4
	Drawer	14 1/2	6 1/4	3/4
<b>B18</b>	Cabinet	18	34 1/2	24
	Door	17 1/2	22 1/2	3/4
	Drawer	17 1/2	6 1/4	3/4
<b>B21</b>	Cabinet	21	34 1/2	24
	Door	20 1/2	22 1/2	3/4
	Drawer	20 1/2	6 1/4	3/4

One drawer

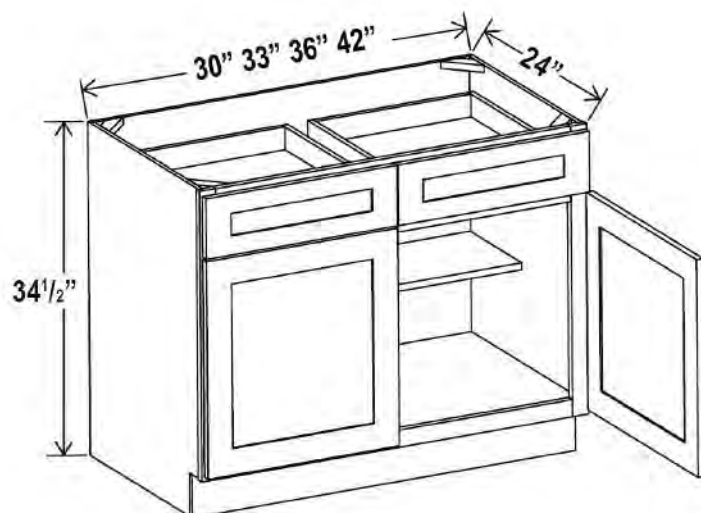
## Base Cabinet Double Doors



Item Code		W	H	D
<b>B24</b>	Cabinet	24	34 1/2	24
	Door	11 3/4	22 1/2	3/4
	Drawer	23 1/2	6 1/4	3/4
<b>B27</b>	Cabinet	27	34 1/2	24
	Door	13 1/4	22 1/2	3/4
	Drawer	26 1/2	6 1/4	3/4

One drawer

## Base Cabinet Double Doors



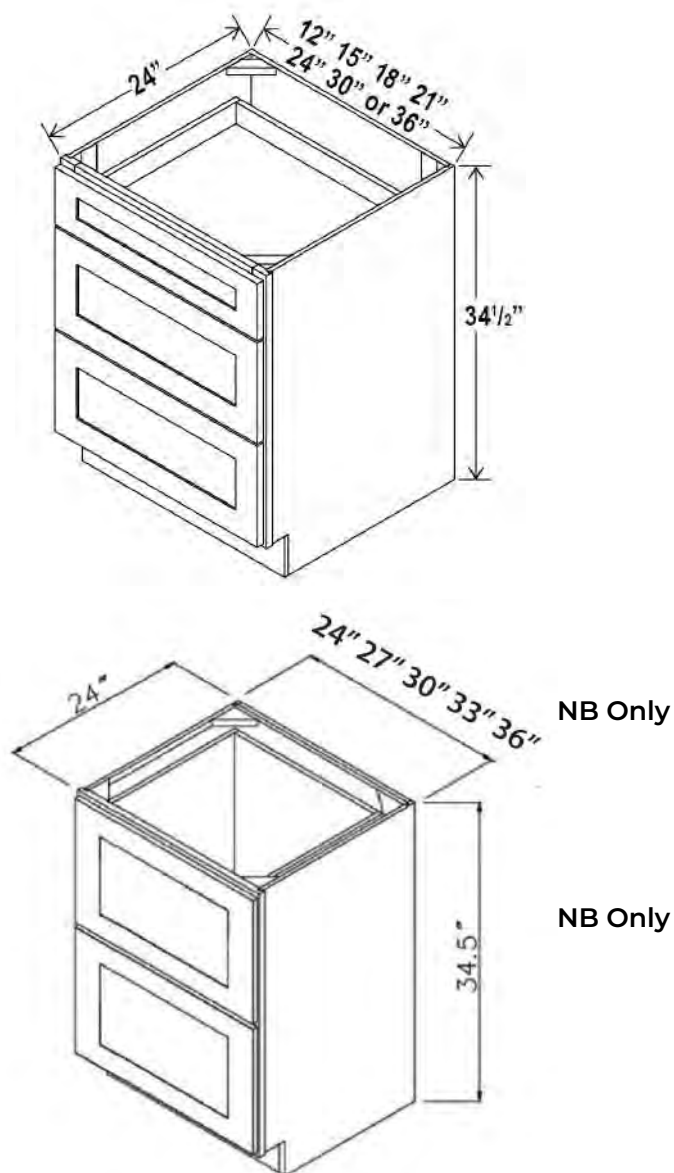
Item Code		W	H	D
<b>B30</b>	Cabinet	30	34 1/2	24
	Door	14 3/4	22 1/2	3/4
	Drawer	14 3/4	6 1/4	3/4
<b>B33</b>	Cabinet	33	34 1/2	24
	Door	16 1/4	22 1/2	3/4
	Drawer	16 1/4	6 1/4	3/4
<b>B36</b>	Cabinet	36	34 1/2	24
	Door	17 3/4	22 1/2	3/4
	Drawer	17 3/4	6 1/4	3/4
<b>B42</b>	Cabinet	42	34 1/2	24
	Door	20 3/4	22 1/2	3/4
	Drawer	20 3/4	6 1/4	3/4

Two drawers

# Base Cabinet Specifications

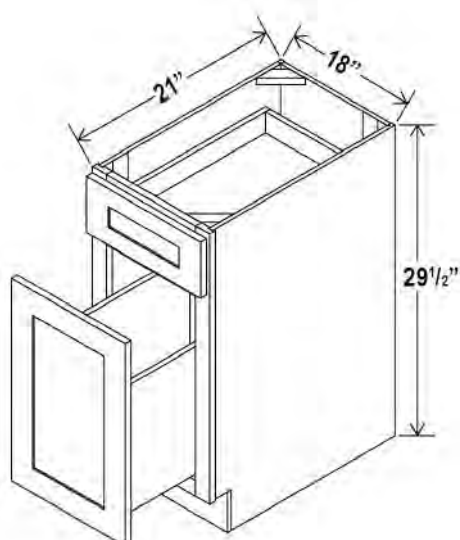
## Base Cabinets

### Drawer Base



Item Code		W	H	D
<b>3DB12</b>	Cabinet	12	34 1/2	24
	Top Drawer	11 1/2	6 1/4	3/4
	Bottom Drawer	11 1/2	11 1/8	3/4
<b>3DB15</b>	Cabinet	15	34 1/2	24
	Top Drawer	14 1/2	6 1/4	3/4
	Bottom Drawer	14 1/2	11 1/8	3/4
<b>3DB18</b>	Cabinet	18	34 1/2	24
	Top Drawer	17 1/2	6 1/4	3/4
	Bottom Drawer	17 1/2	11 1/8	3/4
<b>3DB21</b>	Cabinet	21	34 1/2	24
	Top Drawer	20 1/2	6 1/4	3/4
	Bottom Drawer	20 1/2	11 1/8	3/4
<b>3DB24</b>	Cabinet	24	34 1/2	24
	Top Drawer	23 1/2	6 1/4	3/4
	Bottom Drawer	23 1/2	11 1/8	3/4
<b>3DB27</b>	Cabinet	27	34 1/2	24
	Top Drawer	26 1/2	6 1/4	3/4
	Bottom Drawer	26 1/2	11 1/8	3/4
<b>3DB30</b>	Cabinet	30	34 1/2	24
	Top Drawer	29 1/2	6 1/4	3/4
	Bottom Drawer	29 1/2	11 1/8	3/4
<b>3DB33</b>	Cabinet	33	34 1/2	24
	Top Drawer	32 1/2	6 1/4	3/4
	Bottom Drawer	32 1/2	11 1/8	3/4
<b>3DB36</b>	Cabinet	36	34 1/2	24
	Top Drawer	35 1/2	6 1/4	3/4
	Bottom Drawer	35 1/2	11 1/8	3/4

### Document File Base Cabinet



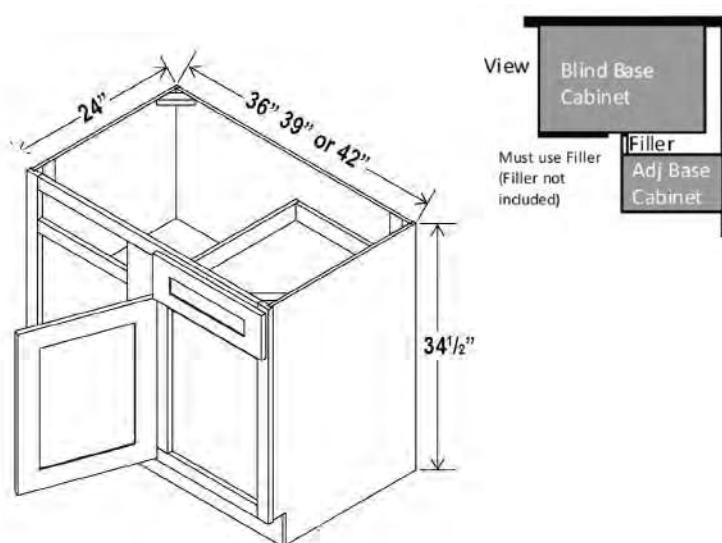
Item Code		W	H	D
<b>DFB18</b>	Cabinet	18	29 1/2	21
	Top Drawer	17 1/2	6 1/4	3/4
	Bottom Drawer	17 1/2	17 1/2	3/4



## Base Cabinets

# Base Cabinet Specifications

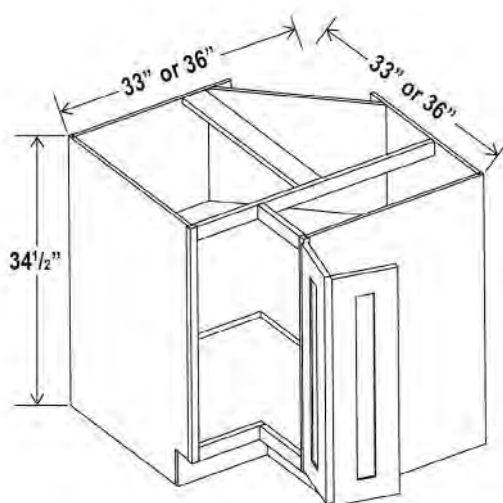
### Blind Corner Base Cabinet



Item Code		W	H	D
<b>BBC36</b>	Cabinet	33	34 1/2	24
	Door	10	22 1/2	3/4
	Drawer	10	6 1/4	3/4
Install range: 36" - 39"				
<b>BBC39</b>	Cabinet	36	34 1/2	24
	Door	12 3/4	22 1/2	3/4
	Drawer	12 3/4	6 1/4	3/4
Install range: 39" - 42"				
<b>BBC42</b>	Cabinet	39	34 1/3	24
	Door	15 3/4	22 1/2	3/4
	Drawer	15 3/4	6 1/4	3/4
Install range: 42" - 45"				

BBC36 36"-39"  
BBC39 39"-42"  
BBC42 42"-45"

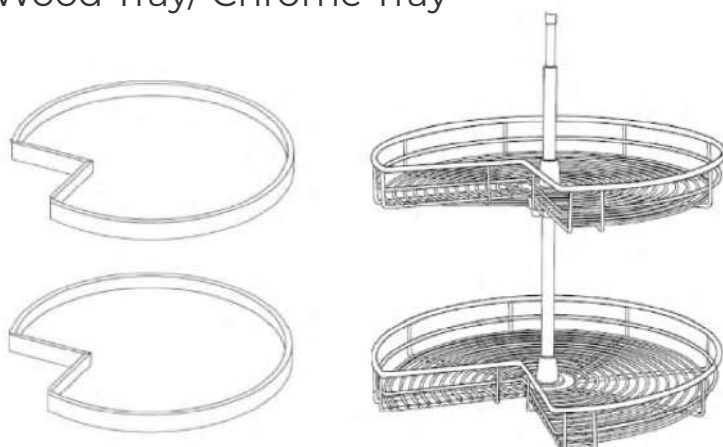
### Easy Reach Base Cabinet



Item Code		W	H	D
<b>ERB33</b>	Cabinet	33	34 1/2	24
	Door	7 5/8	29	3/4
<b>ERB36</b>	Cabinet	36	34 1/2	24
	Door	10 5/8	29	3/4

One bi-fold door

### Wood Tray/ Chrome Tray



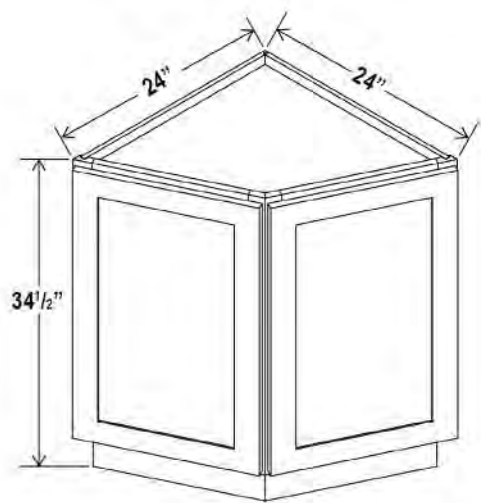
Item Code
Wood Tray
Chrome Tray 33
Chrome Tray 36

\*\* NOTE: Wood tray does not have a pole included in the middle  
Wood Tray \*\*\* Can be used in frameless line. Fits both 33" and 36"  
Trays are shelf mounted

# Base Cabinet Specifications

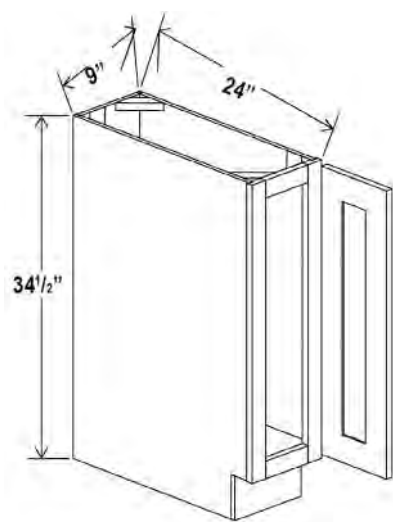
## Base Cabinets

### Base End Cabinet



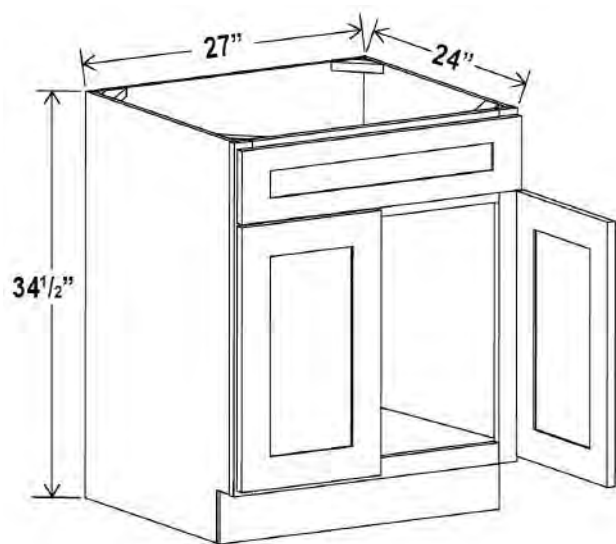
Item Code		W	H	D
<b>BEC24</b>	Cabinet	24	34 1/2	24
	Door	17 1/2	29	3/4

### Base Tray



Item Code		W	H	D
<b>BT09</b>	Cabinet	9	34 1/2	24
	Door	8 1/2	29	3/4

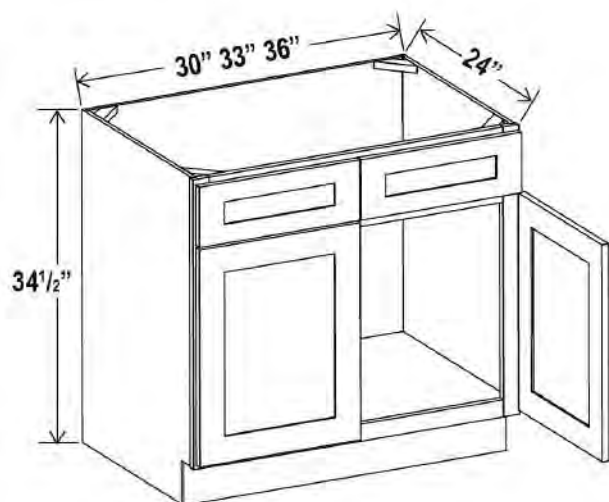
### Sink Base



Item Code		W	H	D
<b>SB27</b>	Cabinet	27	34 1/2	24
	Door	13 1/4	22 1/2	3/4
	Drawer	26 1/2	6 1/4	3/4

One dummy drawer

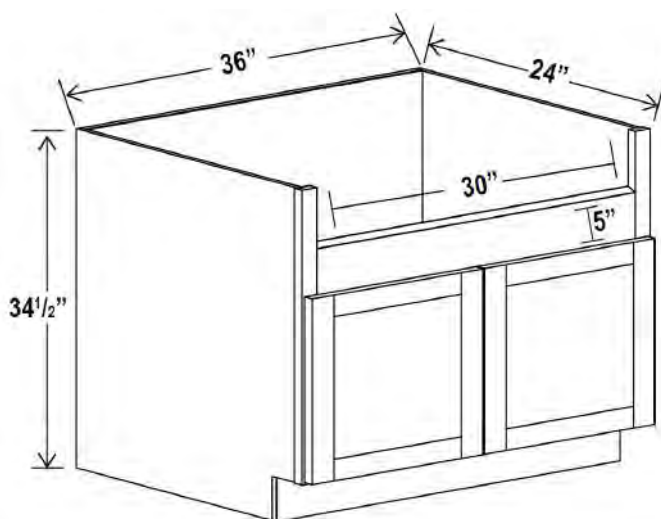
## Sink Base



Item Code		W	H	D
<b>SB30</b>	Cabinet	30	34 1/2	24
	Door	14 3/4	22 1/2	3/4
	Drawer	14 3/4	6 1/4	3/4
<b>SB33</b>	Cabinet	33	34 1/2	24
	Door	16 1/4	22 1/2	3/4
	Drawer	16 1/4	6 1/4	3/4
<b>SB36</b>	Cabinet	36	34 1/2	24
	Door	17 3/4	22 1/2	3/4
	Drawer	17 3/4	6 1/4	3/4

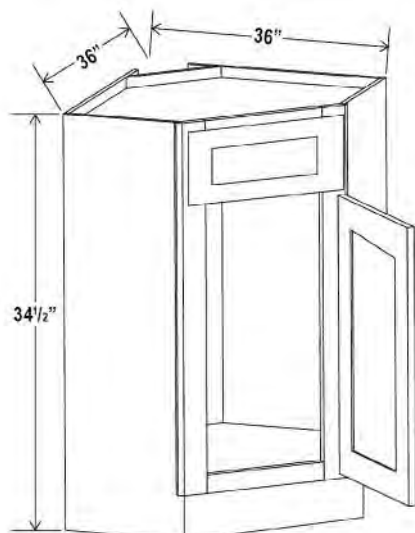
Two dummy drawers

## Farmhouse Sink Base



Item Code		W	H	D
<b>FSB36</b>	Cabinet	36	34 1/2	24
	Door	17 3/4	16 1/2	3/4
Sink Trimout: 30"W X 7 1/2"-9"H				

## Corner Sink Base Cabinet



Item Code		W	H	D
<b>CSB36</b>	Cabinet	36	34 1/2	24
	Door	15 1/4	22 1/4	3/4
	Drawer	15 1/4	6 1/4	3/4

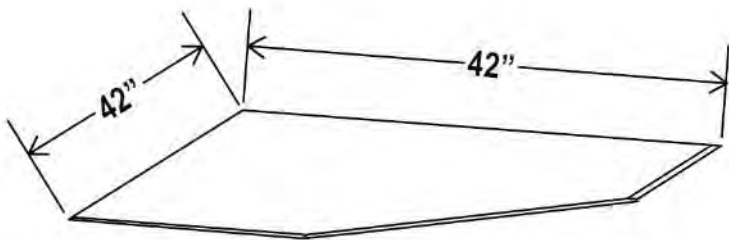
One dummy drawer



# Base Cabinet Specifications

## Base Cabinets

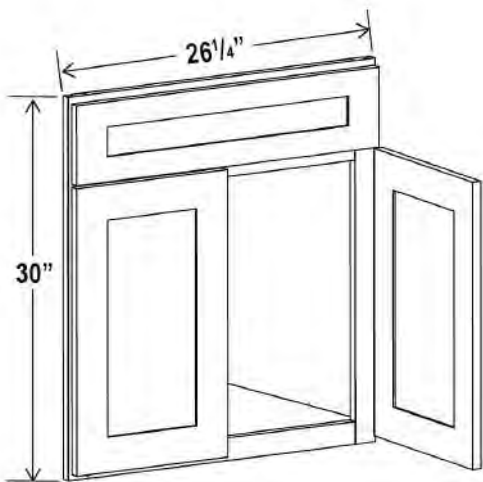
### Corner Sink Base Floor



Item Code		W
<b>SBF4242</b>	Cabinet	42

For use with DCSF42

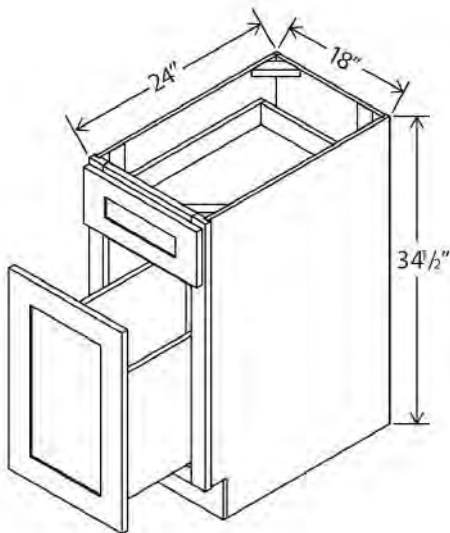
### Corner Sink Base Front



Item Code		W	H	D
<b>DCSF42</b>	Cabinet	26 1/4	30	3/4
	Door	11 3/4	22 1/2	3/4
	Drawer	23 1/2	6 1/4	3/4

For use with SBF4242

### Base Waste Basket Cabinet



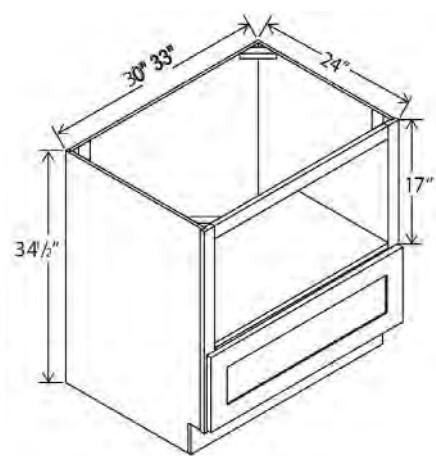
Item Code		W	H	D
<b>BWB18</b>	Cabinet	18	34 1/2	24
	Top Drawer	17 1/2	6 1/4	3/4
	Bottom Drawer	17 1/2	22 1/2	3/4

Waste baskets not included

Base Cabinets

Base Cabinet Specifications

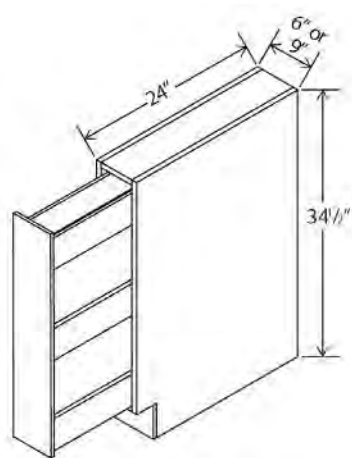
Microwave Base Cabinet



Item Code		W	H	D
MB30	Cabinet	30	34 1/2	24
	Drawer	29 1/2	10 1/2	3/4
	Opening Dimensions: 27"W x 17"H			
MB33	Cabinet	33	34 1/2	24
	Drawer	32 1/2	10 1/2	3/4
	Opening Dimensions: 30"W x 17"H			

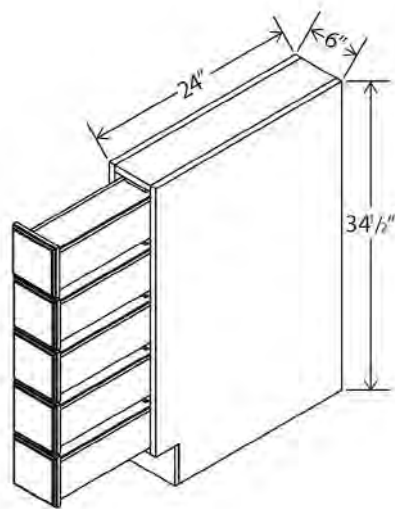
Finished Interiors

Spice Pull Base Cabinet



Item Code		W	H	D
SPB6	Cabinet	6	34 1/2	24
	Drawer	5 1/2	29	3/4
SPB9	Cabinet	9	34 1/2	24
	Drawer	8 1/2	29	3/4

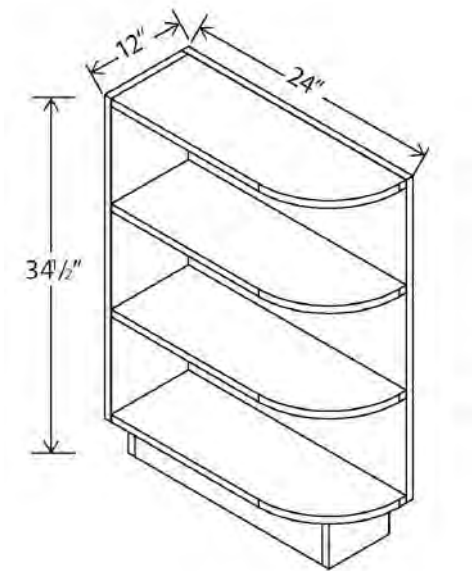
Base Spice Drawer



Item Code		W	H	D
BSDC6	Cabinet	6	34 1/2	24

Natural interior finish

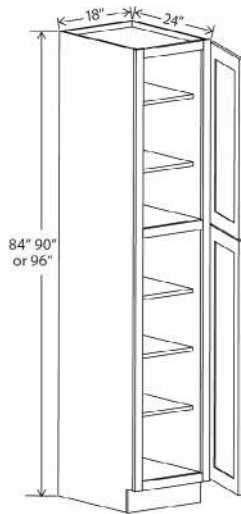
Base End Shelf



Item Code		W	H	D
BES12	Cabinet	12	34 1/2	24



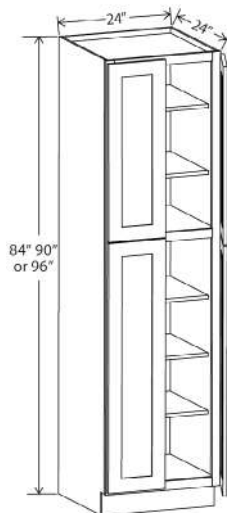
## Utility Pantry, 18"W



Item Code		W	H	D
<b>U188424</b>	Cabinet	18	84	24
	Top Door	17 1/2	29	3/4
	Bottom Door	17 1/2	49 1/4	3/4
<b>U189024</b>	Cabinet	18	90	24
	Top Door	17 1/2	35	3/4
	Bottom Door	17 1/2	49 1/4	3/4
<b>U189624</b>	Cabinet	18	96	24
	Top Door	17 1/2	41	3/4
	Bottom Door	17 1/2	49 1/4	3/4

Two doors  
Two adjustable top shelves  
Three bottom shelves  
Note: Roll out shelf kits available

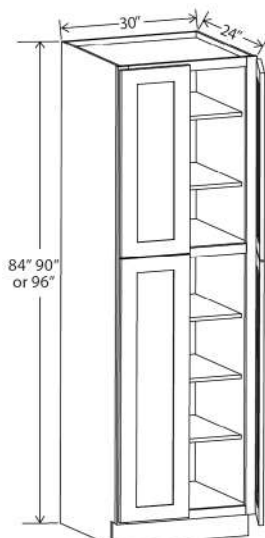
## Utility Pantry, 24"W



Item Code		W	H	D
<b>U248424</b>	Cabinet	24	84	24
	Top Door	11 3/4	29	3/4
	Bottom Door	11 3/4	49 1/4	3/4
<b>U249024</b>	Cabinet	24	90	24
	Top Door	11 3/4	35	3/4
	Bottom Door	11 3/4	49 1/4	3/4
<b>U249624</b>	Cabinet	24	96	24
	Top Door	11 3/4	41	3/4
	Bottom Door	11 3/4	49 1/4	3/4

Four doors  
Two adjustable top shelves  
Three bottom shelves  
Note: Roll out shelf kits available

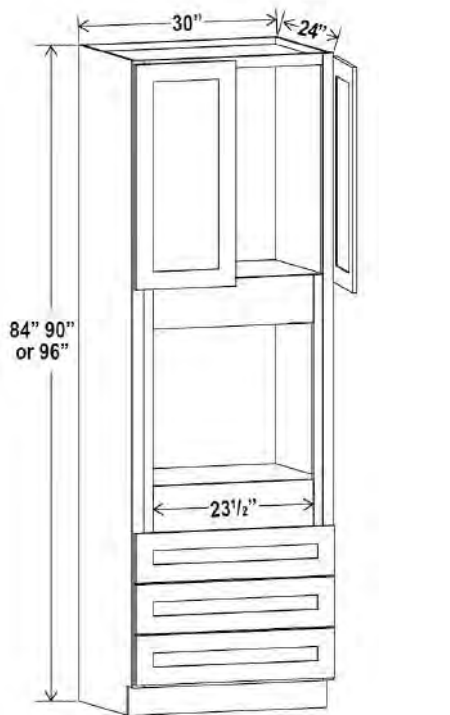
## Utility Pantry, 30"W



Item Code		W	H	D
<b>U308424</b>	Cabinet	30	84	24
	Top Door	14 3/4	29	3/4
	Bottom Door	14 3/4	49 1/4	3/4
<b>U309024</b>	Cabinet	30	90	24
	Top Door	14 3/4	35	3/4
	Bottom Door	14 3/4	49 1/4	3/4
<b>U309624</b>	Cabinet	30	96	24
	Top Door	14 3/4	41	3/4
	Bottom Door	14 3/4	49 1/4	3/4

Four doors  
Two adjustable top shelves  
Three bottom shelves  
Note: Roll out shelf kits available

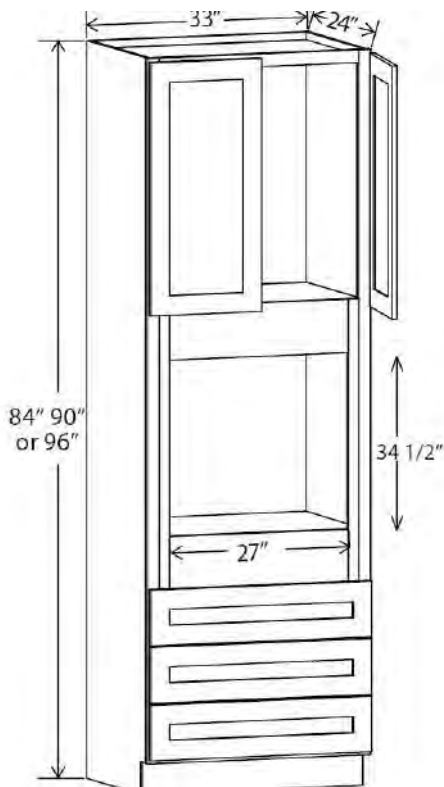
Oven Pantry, 30"W



Item Code		W	H	D
0308424	Cabinet	30	84	24
	Door	14 3/4	17	3/4
	Drawer	29 1/2	7 3/4	3/4
	Opening Dimensions : 24 W x 24 3/8 H			
0309024	Cabinet	30	90	24
	Door	14 3/4	23	3/4
	Drawer	29 1/2	7 3/4	3/4
	Opening Dimensions : 24 W x 24 3/8 H			
0309624	Cabinet	30	96	24
	Door	14 3/4	29	3/4
	Drawer	29 1/2	7 3/4	3/4
	Opening Dimensions : 24 W x 24 3/8 H			

Two doors  
 One large open shelf  
 Three bottom drawers  
 Note: Drawers may be removed to  
 accommodate double ovens.

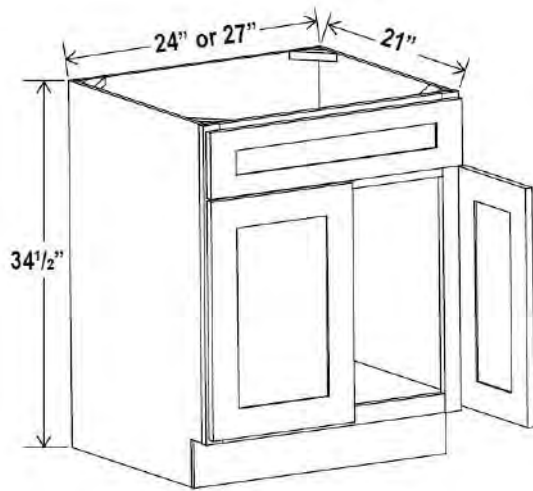
Oven Pantry, 33"W



Item Code		W	H	D
0338424	Cabinet	33	84	24
	Door	16 1/4	17	3/4
	Drawer	32 1/2	7 3/4	3/4
	Opening Dimensions: 27 W x 34 1/2" H			
0339024	Cabinet	33	90	24
	Door	16 1/4	23	3/4
	Drawer	32 1/2	7 3/4	3/4
	Opening Dimensions: 27 W x 34 1/2" H			
0339624	Cabinet	33	96	24
	Door	16 1/4	29	3/4
	Drawer	32 1/2	7 3/4	3/4
	Opening Dimensions: 27 W x 34 1/2" H			

Two doors  
 One large open shelf  
 Three bottom drawers  
 Note: Drawers may be removed to  
 accommodate double ovens.

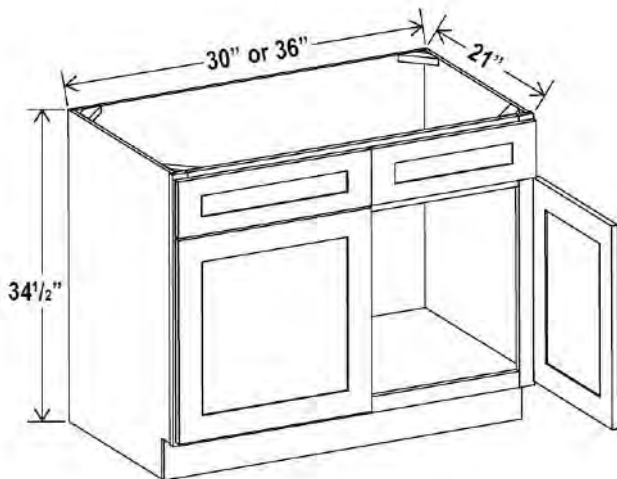
## Vanity Sink Base



Item Code		W	H	D
<b>VS24</b>	Cabinet	24	34 1/2	21
	Door	11 3/4	22 1/2	3/4
	Drawer	23 1/4	6 1/4	3/4
<b>VS27</b>	Cabinet	27	34 1/2	21
	Door	13 1/4	22 1/3	3/4
	Drawer	26 1/2	6 1/4	3/4

*One dummy drawer*

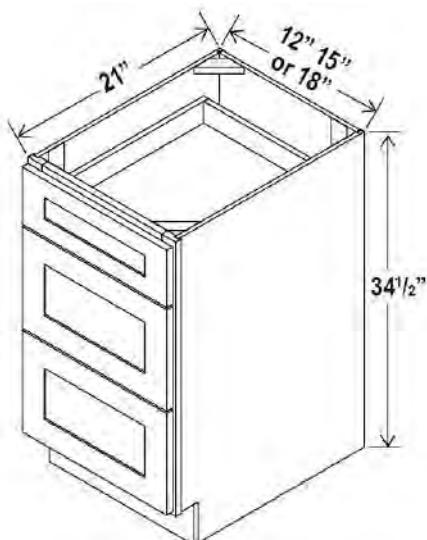
## Vanity Sink Base



Item Code		W	H	D
<b>VS30</b>	Cabinet	30	34 1/2	21
	Door	14 3/4	22 1/2	3/4
	Drawer	14 3/4	6 1/4	3/4
<b>VS36</b>	Cabinet	36	34 1/2	21
	Door	17 3/4	22 1/2	3/4
	Drawer	17 3/4	6 1/4	3/4

*Two dummy drawers*

## Vanity Drawer Base Cabinet



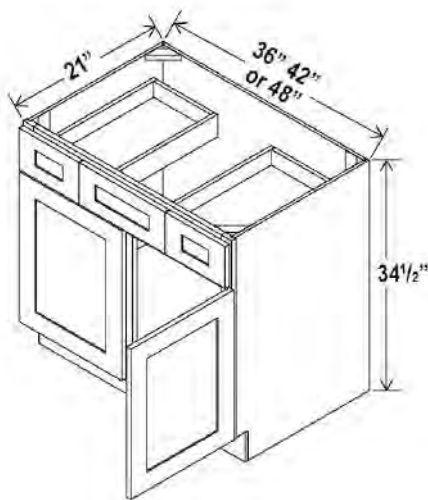
Item Code		W	H	D
<b>3VDB12</b>	Cabinet	12	34 1/2	21
	Top Drawer	11 1/2	6 1/4	3/4
	Bottom Drawer	11 1/2	11 1/8	3/4
<b>3VDB15</b>	Cabinet	15	34 1/2	21
	Top Drawer	14 1/2	6 1/4	3/4
	Bottom Drawer	14 1/2	11 1/8	3/4
<b>3VDB18</b>	Cabinet	18	34 1/2	21
	Top Drawer	17 1/2	6 1/4	3/4
	Bottom Drawer	17 1/2	11 1/8	3/4



# Vanity Cabinet Specifications

Vanities

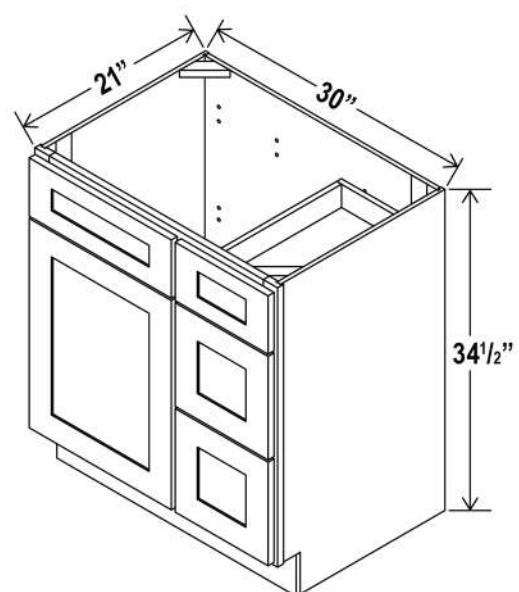
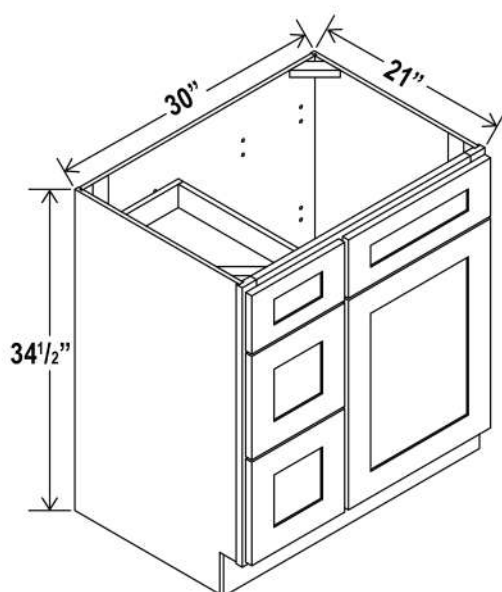
## Vanity Combo



Item Code		W	H	D
<b>VSD36</b>	Cabinet	36	34 1/2	21
	Door	17 3/4	22 1/2	3/4
	Outside Drawer	10 1/4	6 1/4	3/4
	Center Drawer	14 1/2	6 1/4	3/4
<b>VSD42</b>	Cabinet	42	34 1/2	21
	Door	20 3/4	22 1/2	3/4
	Outside Drawer	11 1/2	6 1/4	3/4
	Center Drawer	18	6 1/4	3/4
<b>VSD48</b>	Cabinet	48	34 1/2	21
	Door	23 3/4	22 1/2	3/4
	Outside Drawer	14 1/2	6 1/4	3/4
	Center Drawer	18	6 1/4	3/4

## Vanity Combo

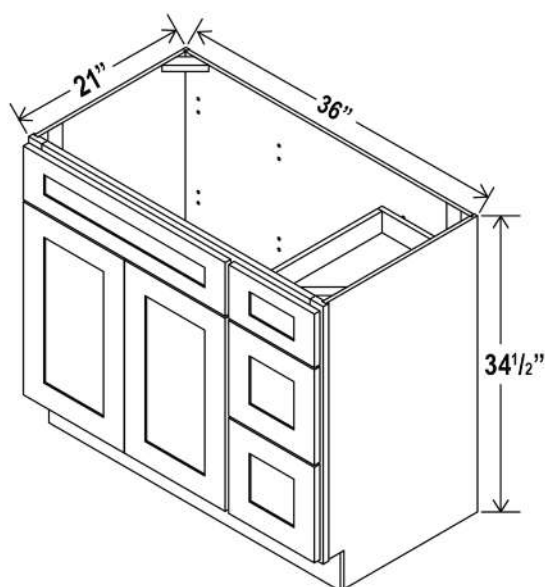
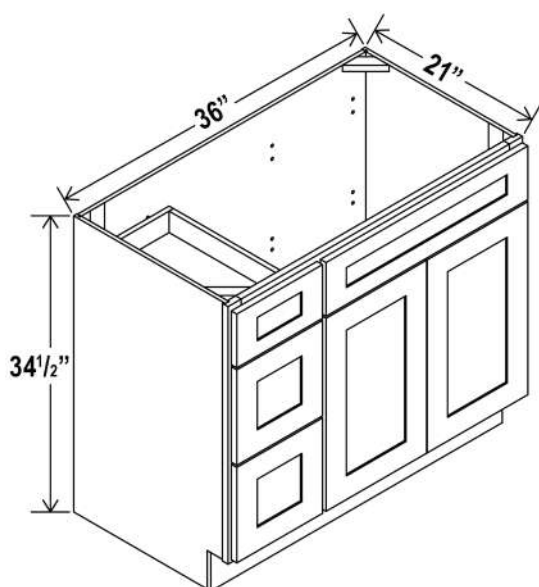
Item Code		W	H	D
<b>V3021DL</b>	Cabinet	30	34 1/2	21
	Door	17 1/2	22 1/2	3/4
	Long Drawer	17 1/2	6 1/4	3/4
	Top Drawer	11 1/2	6 1/4	3/4
	Bottom Drawer	11 1/2	11 1/8	3/4
<b>V3021DR</b>	Cabinet	30	34 1/2	21
	Door	17 1/2	22 1/2	3/4
	Long Drawer	17 1/2	6 1/4	3/4
	Top Drawer	11 1/2	6 1/4	3/4
	Bottom Drawer	11 1/2	11 1/8	3/4



V3021DL: 30" combo with drawers on left  
V3021DR: 30" combo with drawers on right

## Vanity Combo

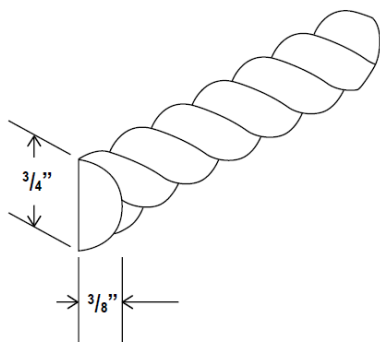
Item Code		W	H	D
<b>V3621DL</b>	Cabinet	36	34 1/2	21
	Door	11 3/4	22 1/2	3/4
	Long Drawer	23 1/2	6 1/4	3/4
	Top Drawer	11 1/2	6 1/4	3/4
	Bottom Drawer	11 1/2	11 1/8	3/4
<b>V3621DR</b>	Cabinet	36	34 1/2	21
	Door	11 3/4	22 1/2	3/4
	Long Drawer	23 1/2	6 1/4	3/4
	Top Drawer	11 1/2	6 1/4	3/4
	Bottom Drawer	11 1/2	11 1/8	3/4



V3621DL: 36" combo with drawers on left  
V3621DR: 36" combo with drawers on right

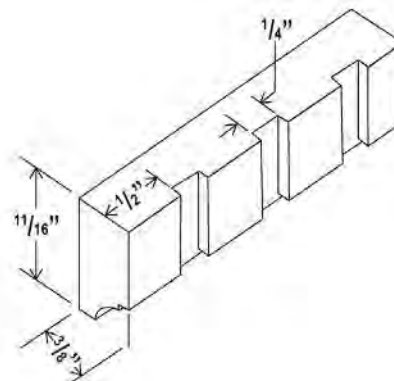
### Rope Moulding

Item Code	L
ROPE	96



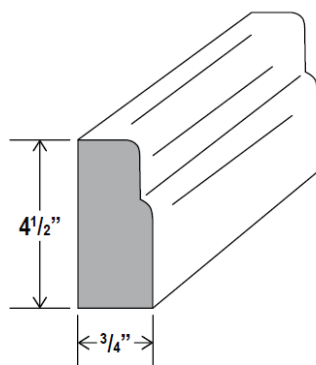
### Dentil Moulding

Item Code	L
DMTIS	96



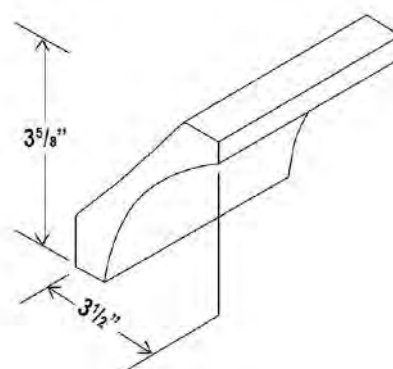
### Furniture Base

Item Code	L
FBM	96



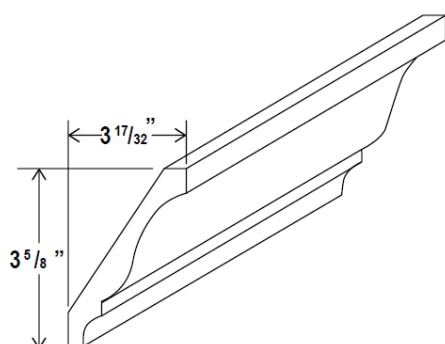
### Cove Crown Moulding

Item Code	L
COV	96



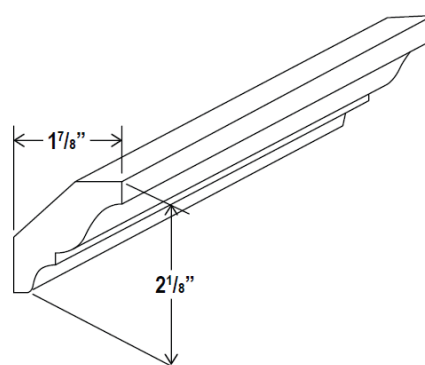
### Decorative Moulding

Item Code	L
BCM8(DCM)	96



### Crown Moulding

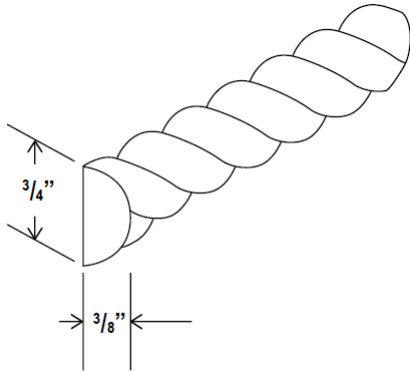
Item Code	L
CM8	96





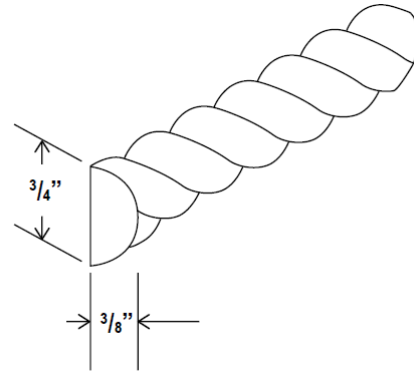
## Inset Crown Moulding

Item Code	L
RCM4S(LCM)	96



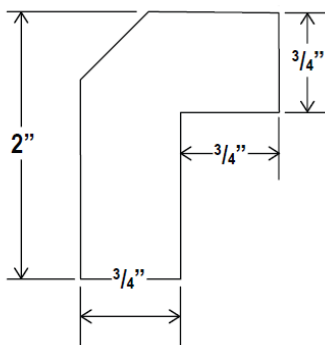
## Angle Crown Moulding

Item Code	L
ACM8	96



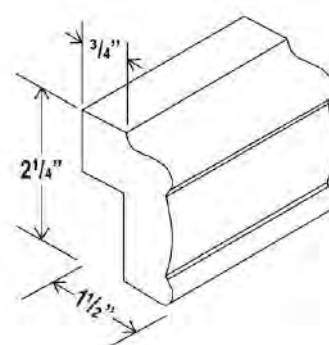
## Angle Light Rail Moulding

Item Code	L
ALRM8	96



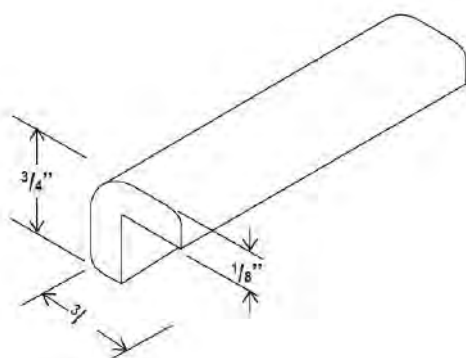
## Light Rail Moulding

Item Code	L
LRM8	96



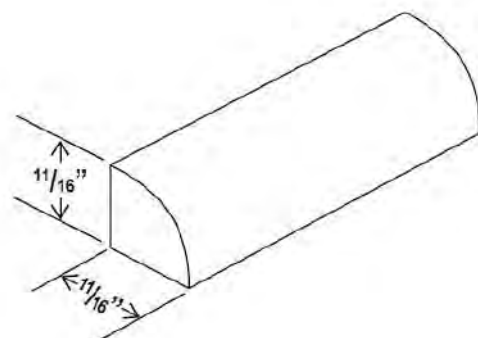
## Outside Corner Moulding

Item Code	L
OCM8	96



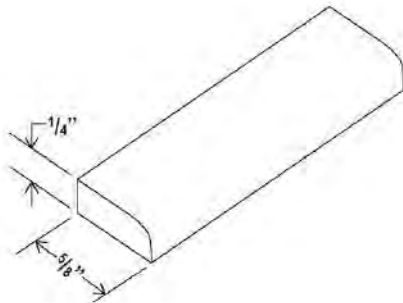
## Shoe Moulding

Item Code	L
SHM	96



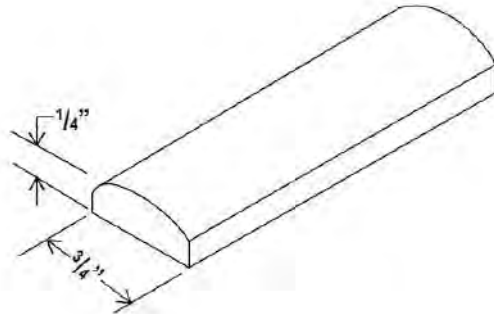
## Scribe Moulding

Item Code	L
SM8(SCR)	96



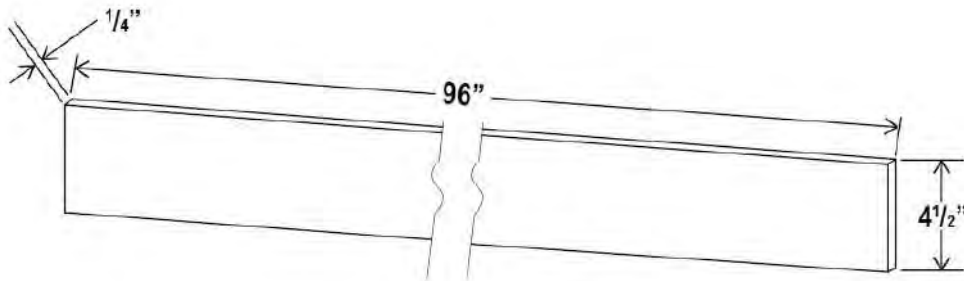
## Batten Moulding

Item Code	L
BAM	96



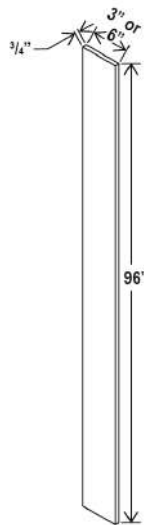
## Toe Kick

Item Code	L
TKC	96



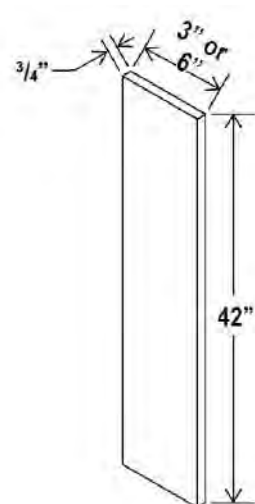
## Tall Filler

Item Code	L
F396	96
F696	96



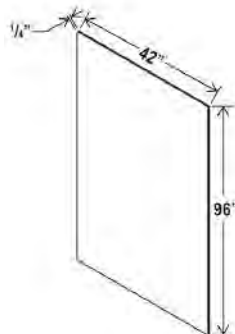
## Filler

Item Code	L
F342	42
F642	42



## Finish Plywood Panel

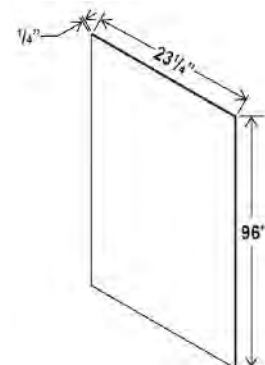
Item Code	L
FPV4296	96



Note: Edges are not finished

## Tall Skin Veneer Panel

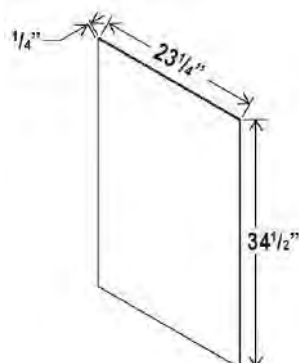
Item Code	L
USV2496	96



Note: Edges are not finished

## Base Skin Veneer Panel

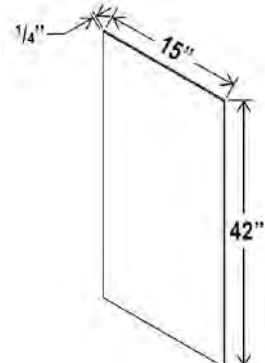
Item Code	L
BSV	34 1/2



Note: Edges are not finished

## Wall Skin Panel

Item Code	L
WSV42	42



Note: Edges are not finished

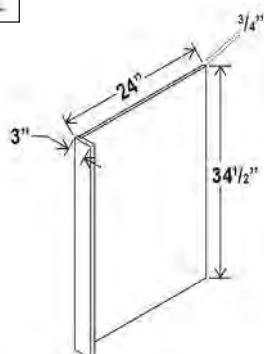


# Fillers & Panels

## Fillers & Panels

### Dishwasher Return Panel

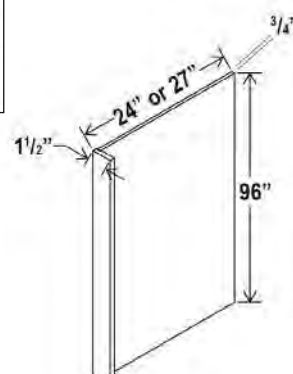
Item Code	L
DWR3	34 1/2



Note: Edges are not finished

### Refrigerator End Panel

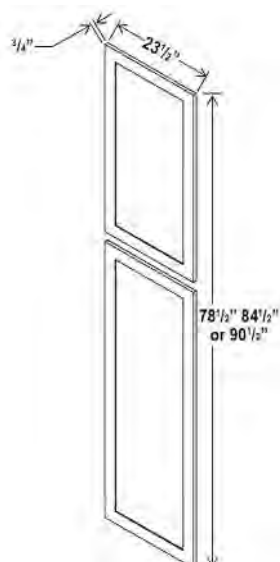
Item Code	L
REPV2496	96
REPV2796	96



Note: Edges are not finished

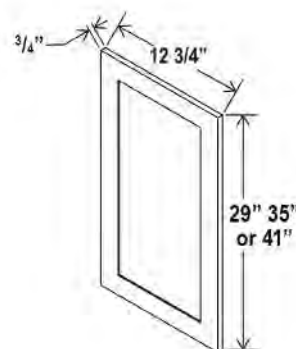
### Tall Decorative Door Panel

Item Code	L
TDEP2484	78 1/2
TDEP2490	84 1/2
TDEP2496	90 1/2



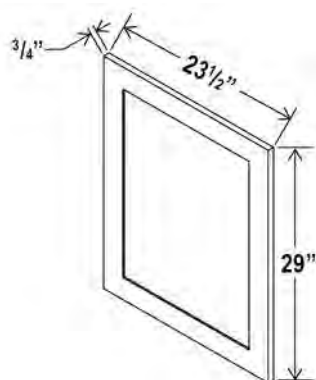
### Wall Decorative Door Panel

Item Code	L
WDEP30	29
WDEP36	35
WDEP42	41



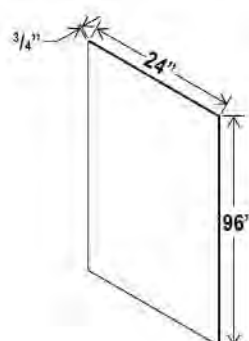
### Base Decorative Door Panel

Item Code	L
BDEP	29



### Shelf Board

Item Code	L
S2496	96

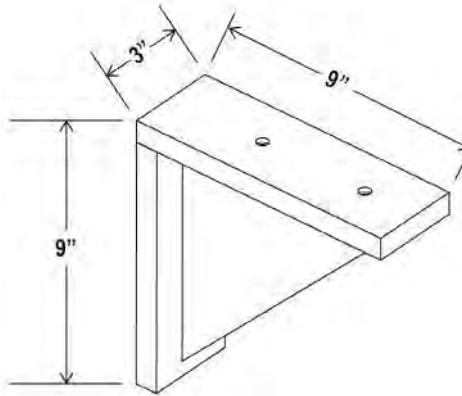


Banded on both edges  
Finished on all 4 sides  
Color to match cabinet

## Corbel

Item Code

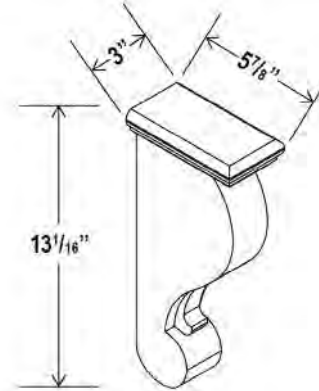
CB9



## Corbel

Item Code

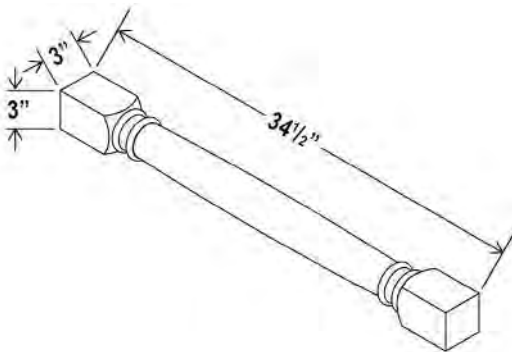
CBT



## Classic Decorative Leg

Item Code

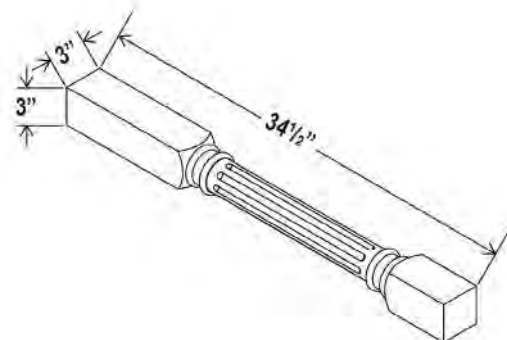
CLDL



## Fluted Decorative Leg

Item Code

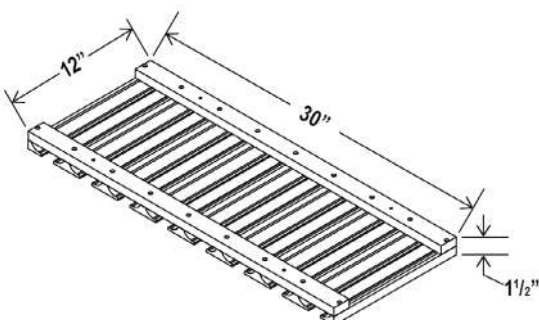
FLDL



## Glass Holder

Item Code

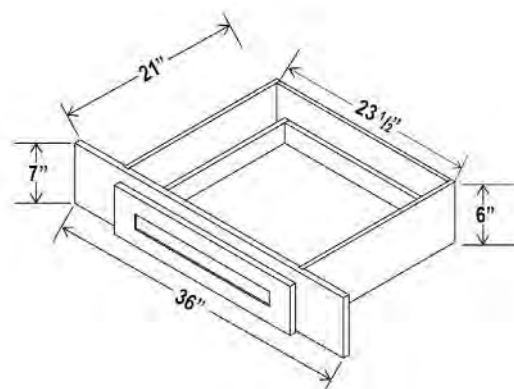
SGH30



## Knee Drawer

Item Code

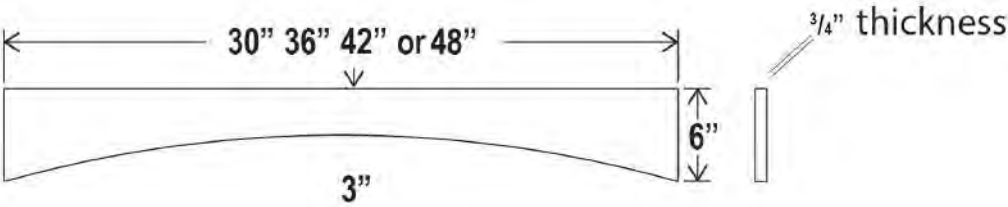
VKD36



# Accessories

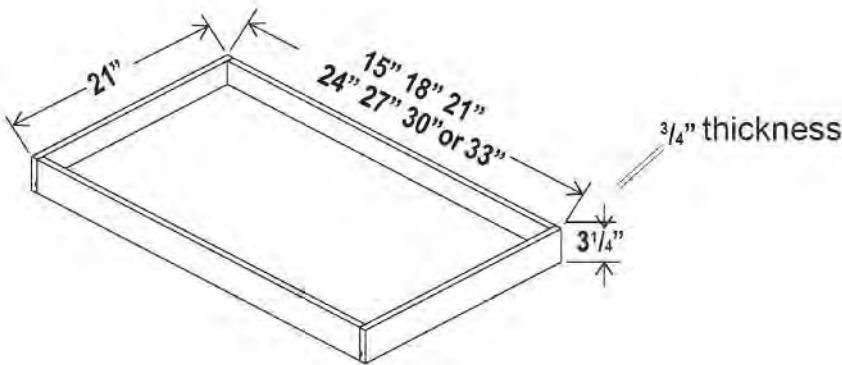
# Accessories

## Arched Valance



Item Code
VA30
VA36
VA42
VA48

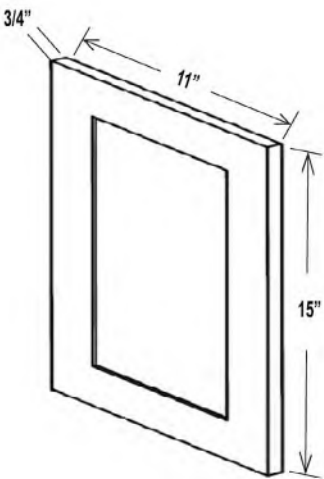
## Roll Out Tray



Item Code
RS18
RS21
RS24
RS27
RS30
RS33
RS36

*Note: Natural finish. Side mount only.*

## Sample Door



Item Code
SD







